



**WORKING YOUR WAY THROUGH AND INTO THE AAPM**

*Bruce Thomadsen  
AAPM President*

1431 Prince Street, Alexandria, VA 22314 | 571-298-1300 | www.aapm.org

---

---

---

---

---

---

---

---



**DISCLOSURES**



- Professor of Medical Physics at the University of Wisconsin
- The President of the Center for the Assessment of Radiological Sciences, a 501(c)(3) non-profit Patient Safety Organization listed with the Agency for Healthcare Research and Quality, dedicated to improving quality and patient safety in radiotherapy and radiology. ***I receive no remuneration from CARS.***



---

---

---

---

---

---

---

---



**LEARNING OBJECTIVES**

- Learn about the AAPM and its Organization
- Learn about breaking into the AAPM structure

---

---

---

---

---

---

---

---





**MEDICAL PHYSICS WORKFORCE NEEDS**

- How many new medical physicists are needed now?
- How many will be needed in a few years?
  - A function of Retirements
  - A function of CMS changes
  - A function of NIH changes
- How many should be, or could be, minted each year?
- How good is the match between:
  - Number needed and number coming out of residencies
  - Number of graduates and residency slots and other types of jobs
  - Balance between therapy, imaging and nuclear, and other types
- We need to get numbers. **We are working on that.**

---

---

---

---

---

---

---

---



- Future Numbers  
 "Prediction is very difficult, especially about the future."  
     ~~Yogi Berra~~  
     ~~Samuel Goldwyn~~  
     ~~Niels Bohr~~  
     Piet Hein?  
     Robert Storm Petersen?  
     (Mark Twain? With no evidence)

---

---

---

---

---

---

---

---



**AND VISIONARY ACTIVITIES**

- Future Working Group
- Medical Physics 3.0

---

---

---

---

---

---

---

---



**AND VISIONARY ACTIVITIES**

- Future Working Group
- Medical Physics 3.0
- And this was the focus of the President's Symposium and Workshop yesterday

---

---

---

---

---

---

---

---



**AAPM INTERACTIONS WITH THE WORLD**

With

- Governmental agencies (NRC, NIH, FDA)
- State regulators and legislators, and the CRCPD
- Certification bodies (ABR, CAMPEP, ACGME)
- Advisory bodies (IAEA, NCRP, ICRU, ICRP)
- National sister societies (RSNA, ASTRO, ABS, HPS, ARRT)
- International sister societies (COMP, ESTRO, IOMP, EFOMP)

---

---

---

---

---

---

---

---



**AAPM GOVERNANCE STRUCTURE**




---

---

---

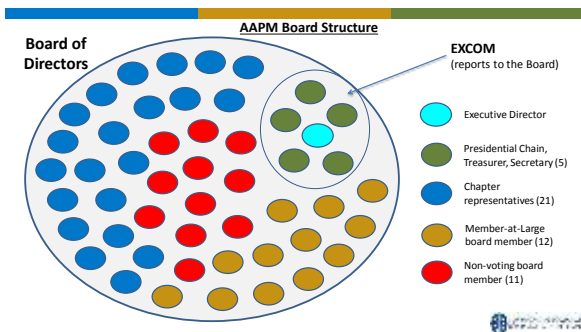
---

---

---

---

---




---

---

---

---

---

---

---

---



**PRINCIPAL BOARD RESPONSIBILITIES**

- Governance and leadership
  - Evaluate composition, knowledge, and effectiveness of the board
  - Develop future board members and organizational leaders
- Strategic direction, thinking and plan
  - Develop and clarify organizational goals
  - Evaluate opportunities and formulate organizational strategies
  - Assess performance of strategy via critical success factors and benchmarks
- Monitor ethics and financial integrity of the organization
- Ensure needs of the members are being satisfied
- Provide oversight and support of the Executive Director
- Evaluate organizational performance and operational results

---

---

---

---

---

---

---

---



**EXECUTIVE COMMITTEE (EXCOM)**

- President-elect – Cynthia McCollough
- President – Bruce Thomadsen
- Chair of the Board – Melissa Martin
- Treasurer – Mahadevappa Mahesh
- Secretary – Susan Richardson
- Executive Director – Angela Keyser
- (ex official) President-elect-designate – Saiful Huq

---

---

---

---

---

---

---

---



### WE ARE ALL EARS

- The leadership, and EXCOM in particular, want to hear from you.
- We attend chapter meeting to facilitate communication with members.
- All suggestions and comments are taken seriously.
- If something bothers you, please let us know.
- Oh, and if something particularly delights you, please let us know that also.

---

---

---

---

---

---

---

---



### DIGGING DOWN

The general pattern for the organization is

- Council (Administrative, Educational, Professional, Science)
  - Committee
    - Subcommittee
      - Working Group
        - Task Group

These are where the work happens

---

---

---

---

---

---

---

---



### HOW TO GET IN

- It is usually easiest to start at the task-group level.
- You can look at the Committee Classifieds where groups looking for members sometimes advertise.
  - The software is due for some revamping.
  - Chairs are encouraged to use this resource.
- You can also attend committees (in the general sense) in which you are interested.
  - Almost all AAPM committees are open to any member.
  - Talk with the chair, attend the meetings and ask to be added as a guest.
  - Often, new members are chosen from guests who attend and participate.

---

---

---

---

---

---

---

---



**SUMMARY**

- The AAPM is a very active and happy organization, but we are trying to make it happier and better.
- The organizational structure of the AAPM is deep and broad, but not that hard to navigate once you understand some simple principles.
- You have the responsibility to let us know how you think the AAPM could improve.
- The AAPM is the most fun if you get involved. You do make a difference.

---

---

---

---

---

---

---