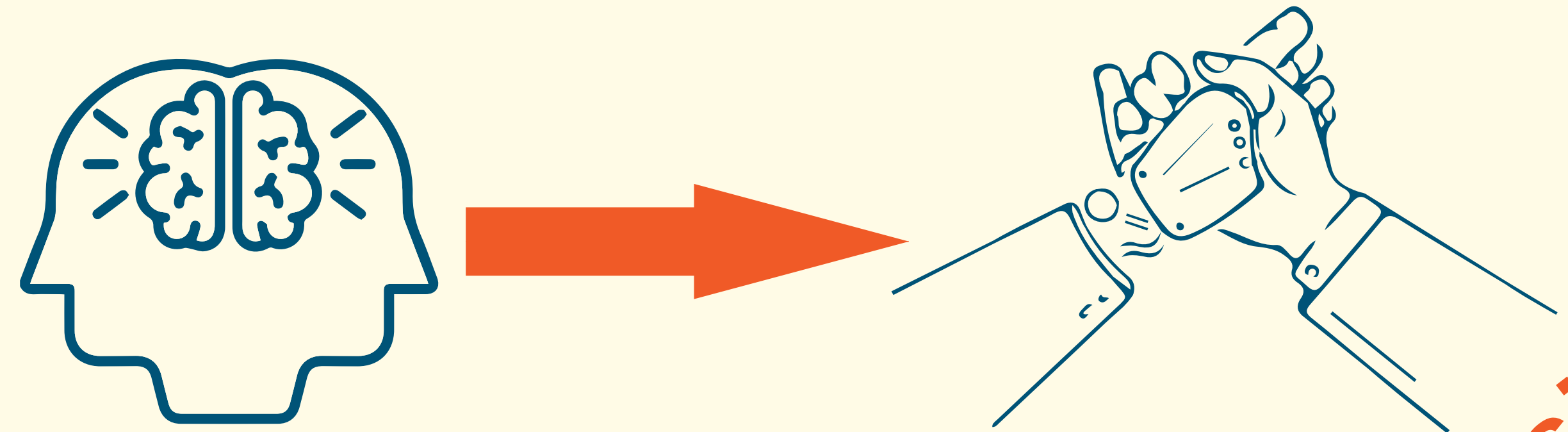


Whole breast radiation treatment planning: **Time Consuming**

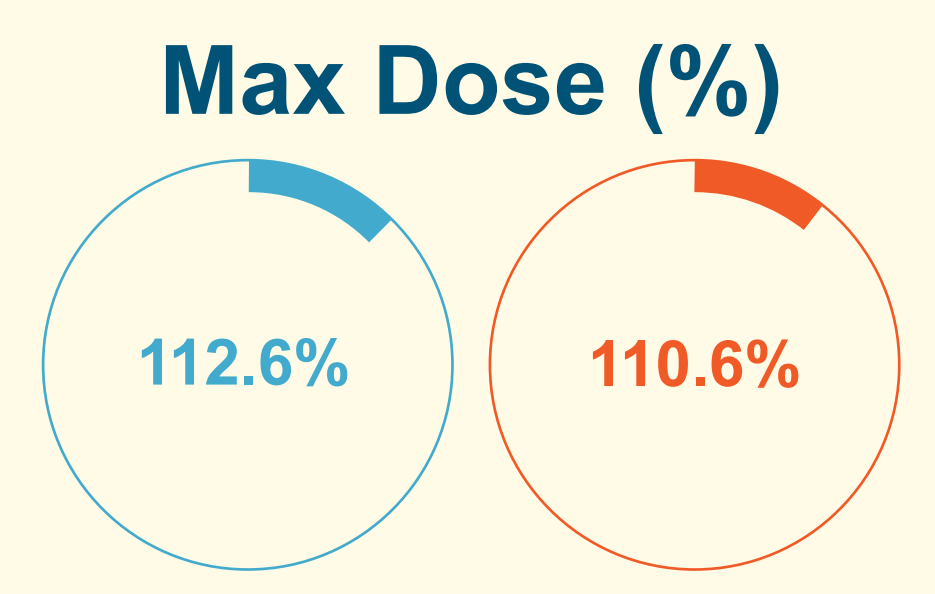
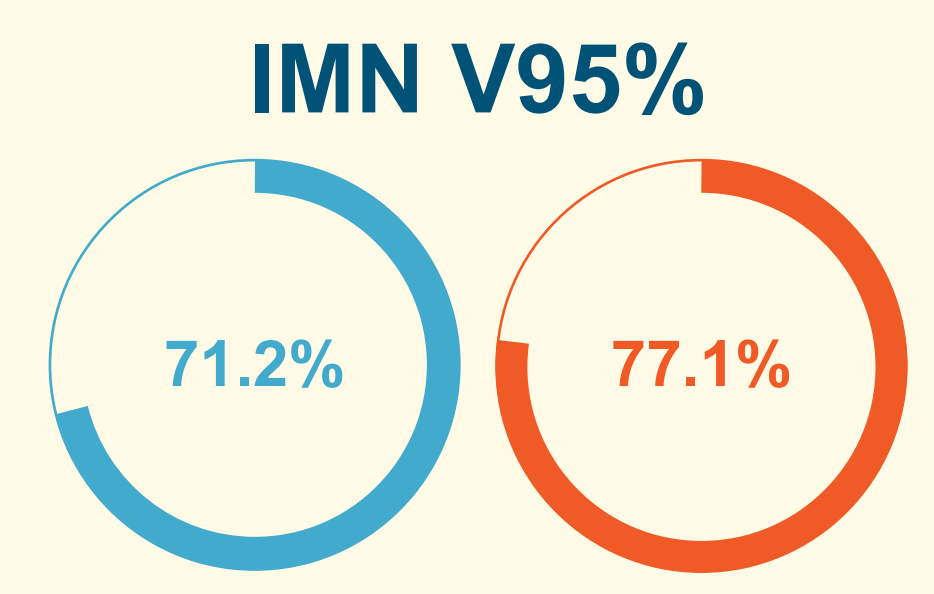
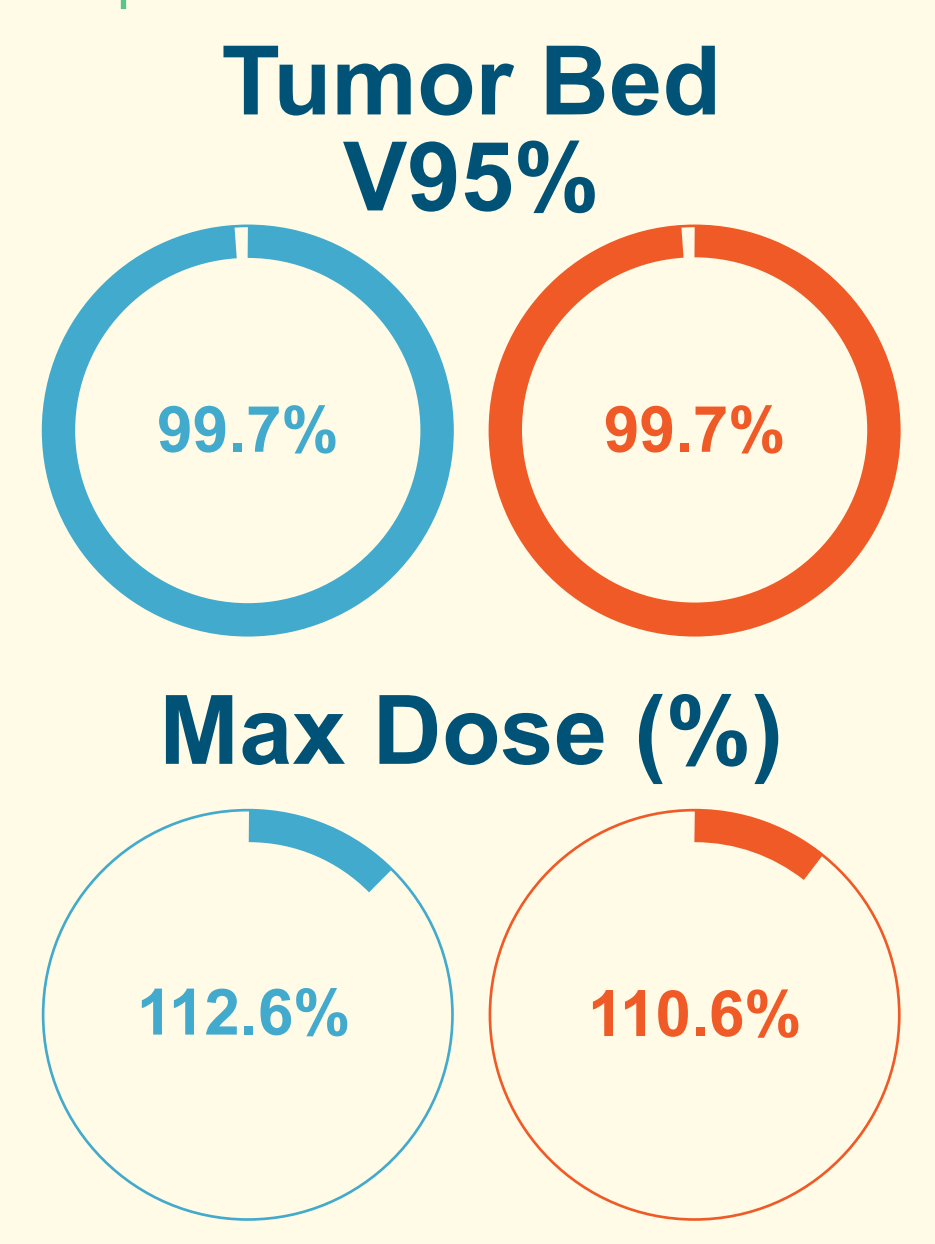
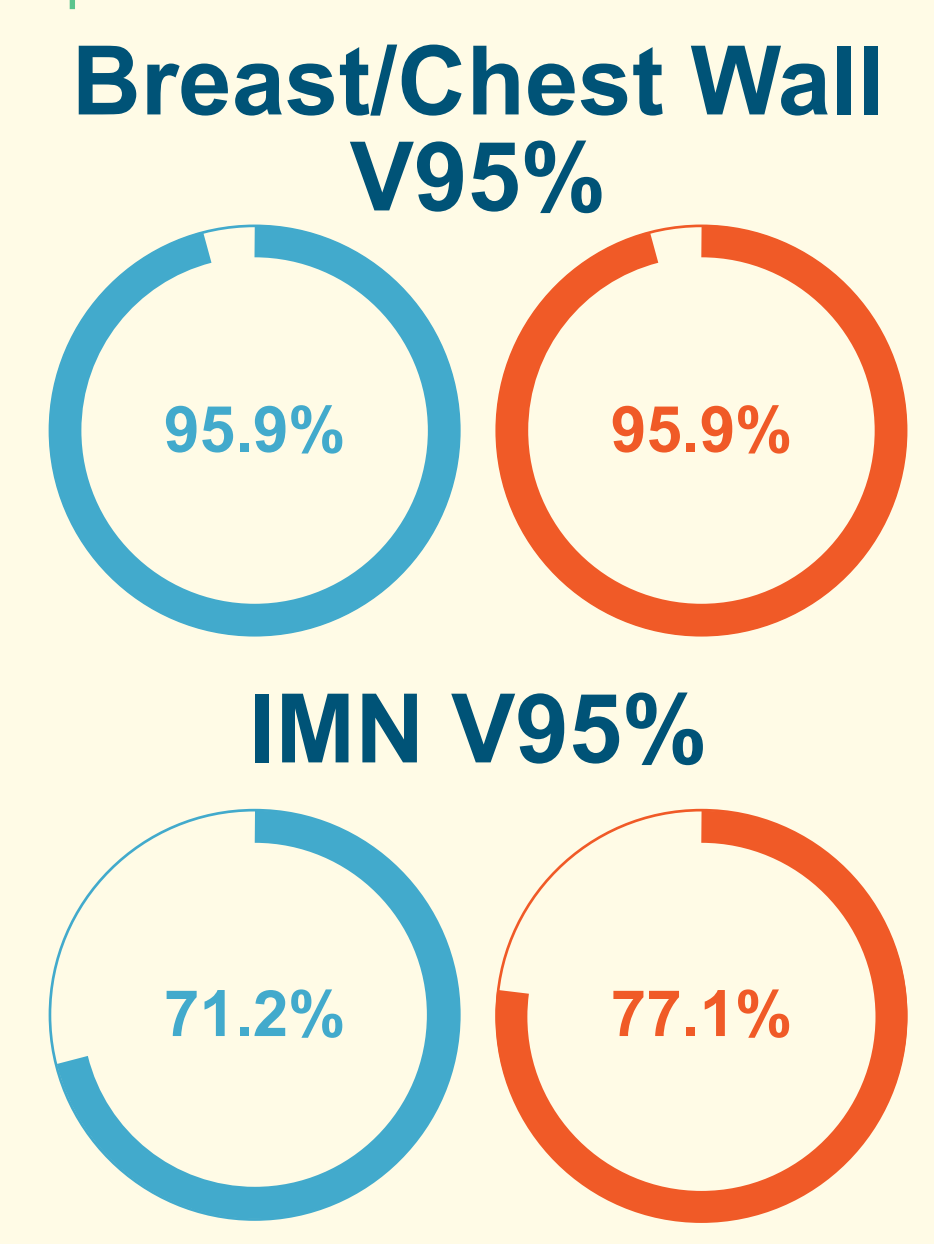
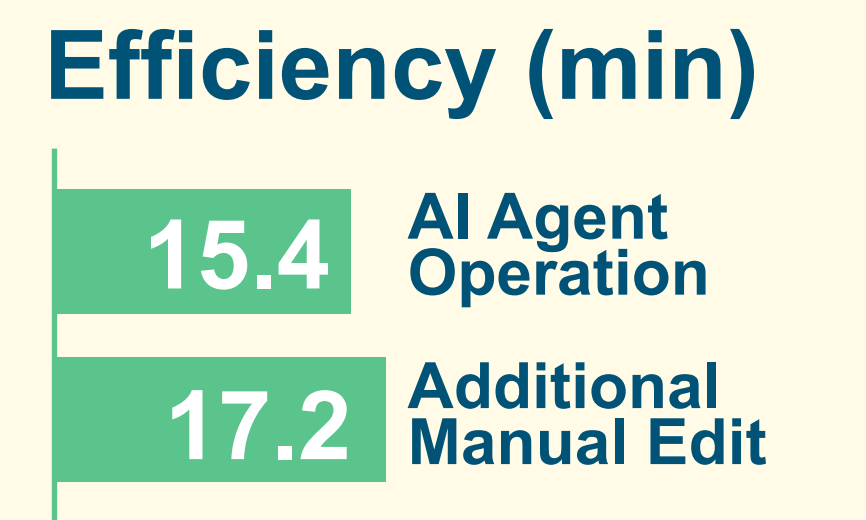
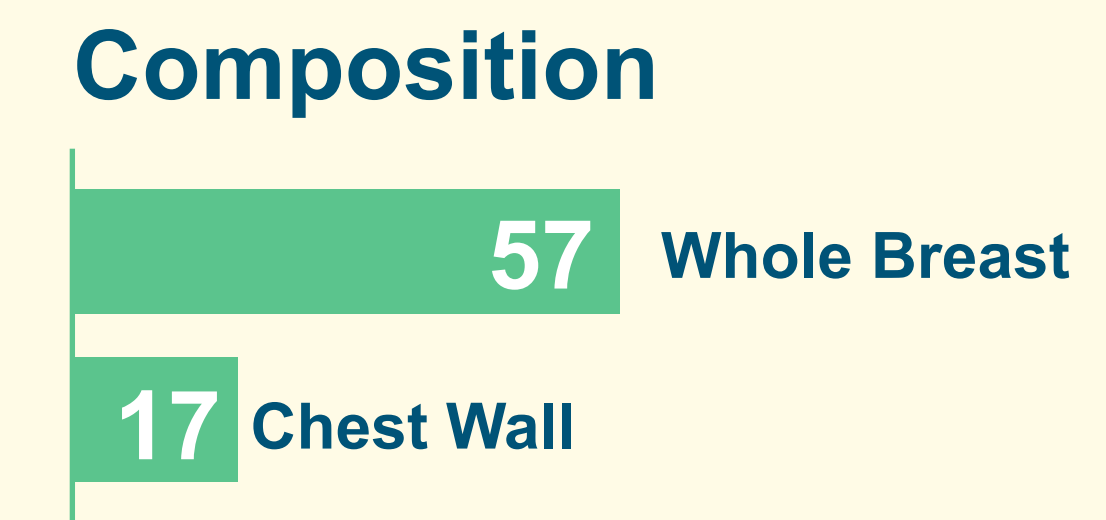
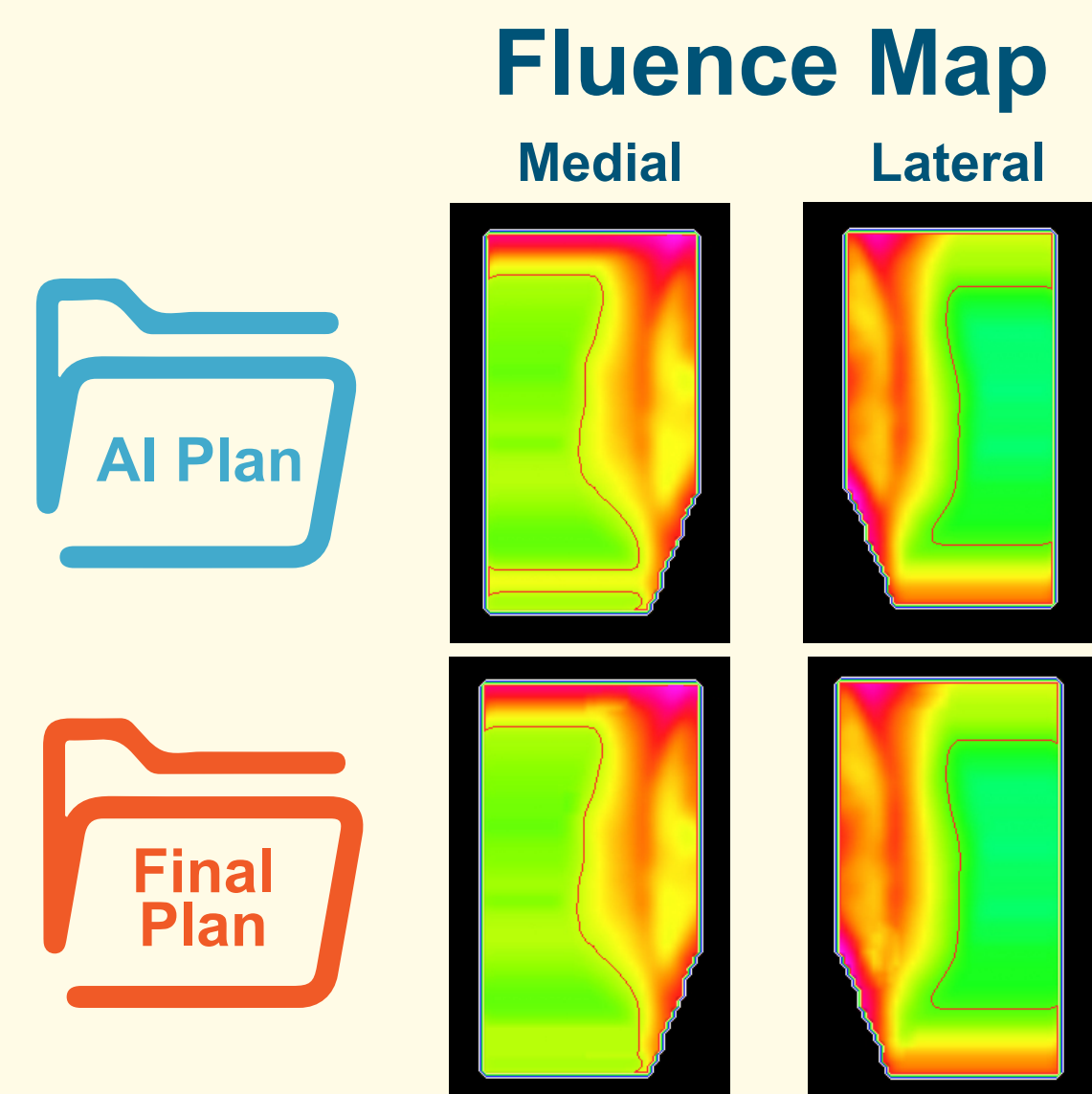
Artificial intelligence assisted planning: **More Efficiency**

Current mission: **Building Trust**



Mission

Performance



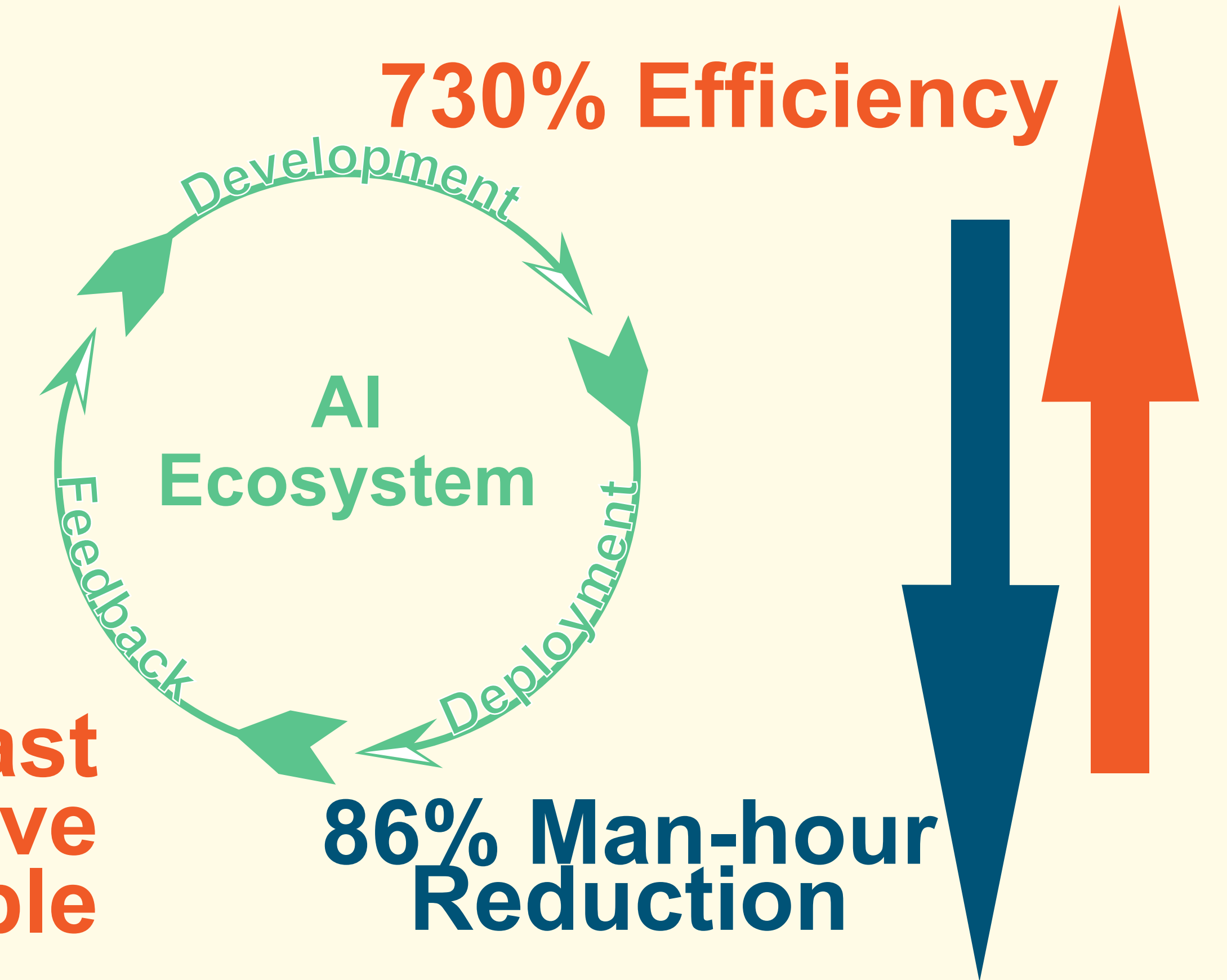
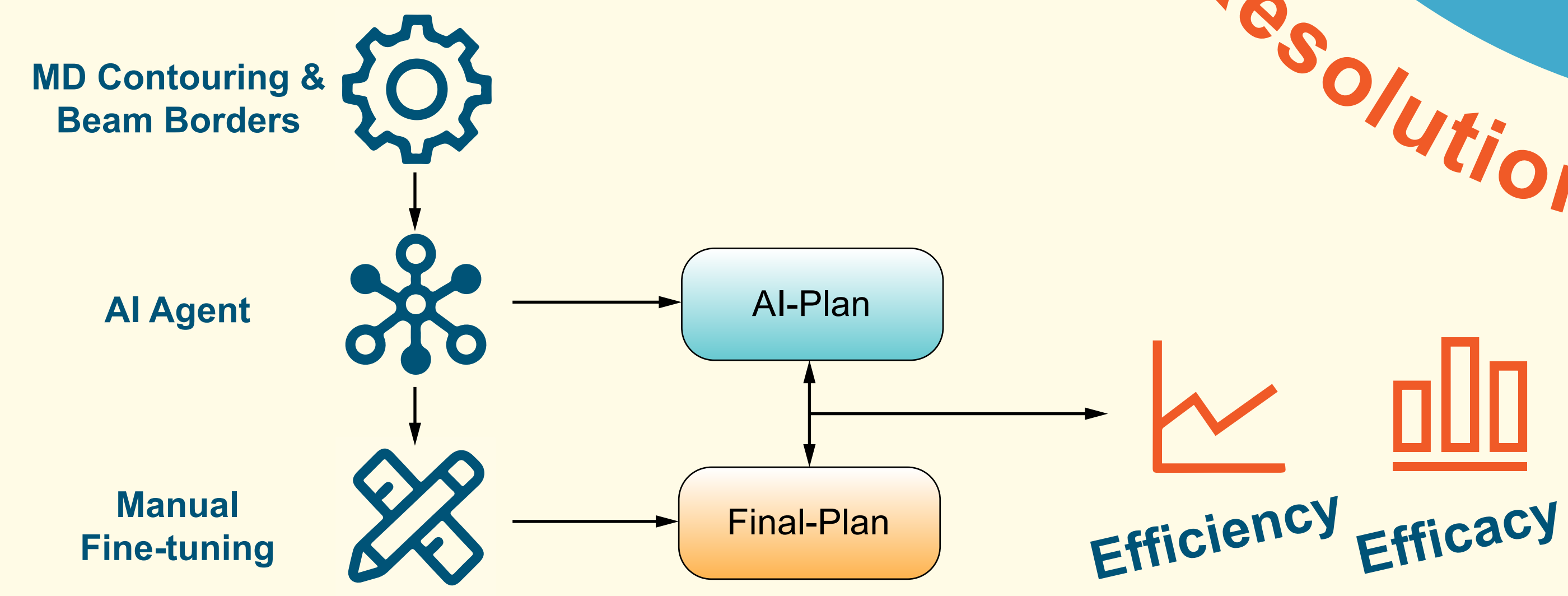
Clinical Implementation of Artificial Intelligence

Powered Whole Breast Radiation Therapy Auto-Planning Agent

Yang Sheng, Wentao Wang, Rachel Blitzblau, Leigh O'Neill, Jay Morrison, Suzanne Catalano, Fang-Fang Yin, Q. Jackie Wu, and Sua Yoo
Duke University Medical Center

Resolution

Vision



AI agent is **Fast Effective Dependable**

AI • Sheng et al. Automatic Planning of Whole Breast Radiation Therapy using Machine Learning Models. Frontiers Oncology, 9, 750, 2019