

# Using Automated Phantom Analysis to Improve Imaging and Volumetric Quality Metrics

Ariel Epstein Dickson  
The Phantom Laboratory, Inc.



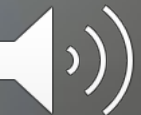
# CT Phantoms

## Basic Imaging Performance

- CT number accuracy
- Uniformity and noise
- High contrast resolution
- Low contrast resolution
- Slice thickness



Catphan® Family CT Phantoms



# Corgi CT Phantom



Ideal for small CT systems including dental and extremity scanners.

Tests include:

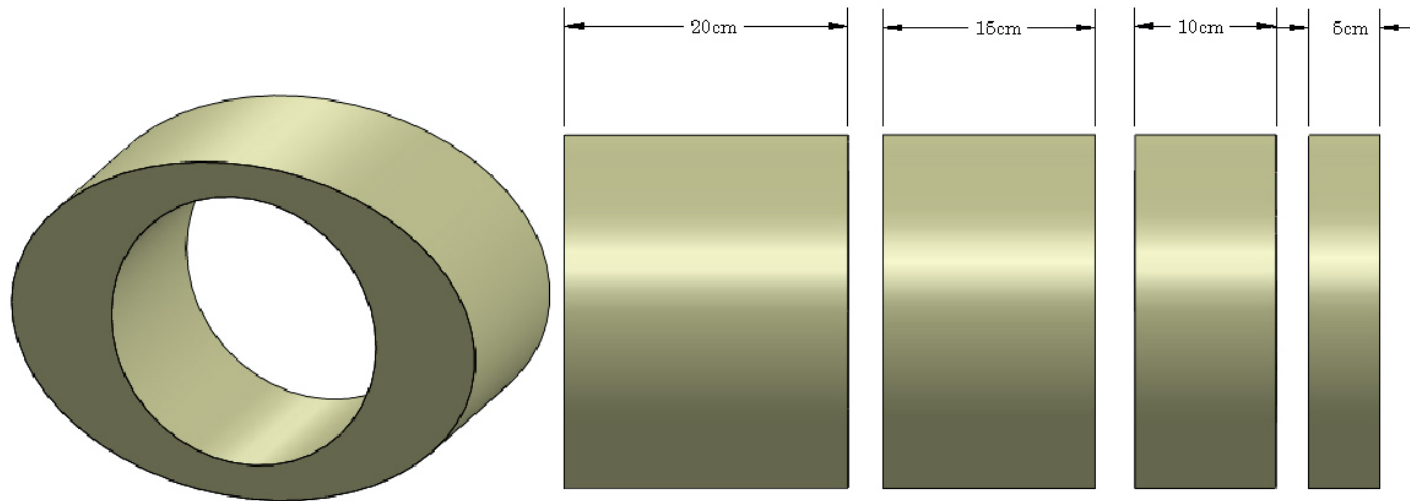
- Sensitometry
- Resolution – axial 45° or other angle
- Cone artifact beam test
- X-Y distortion measurement
- Z distortion measurement
- Holes for dose measurements



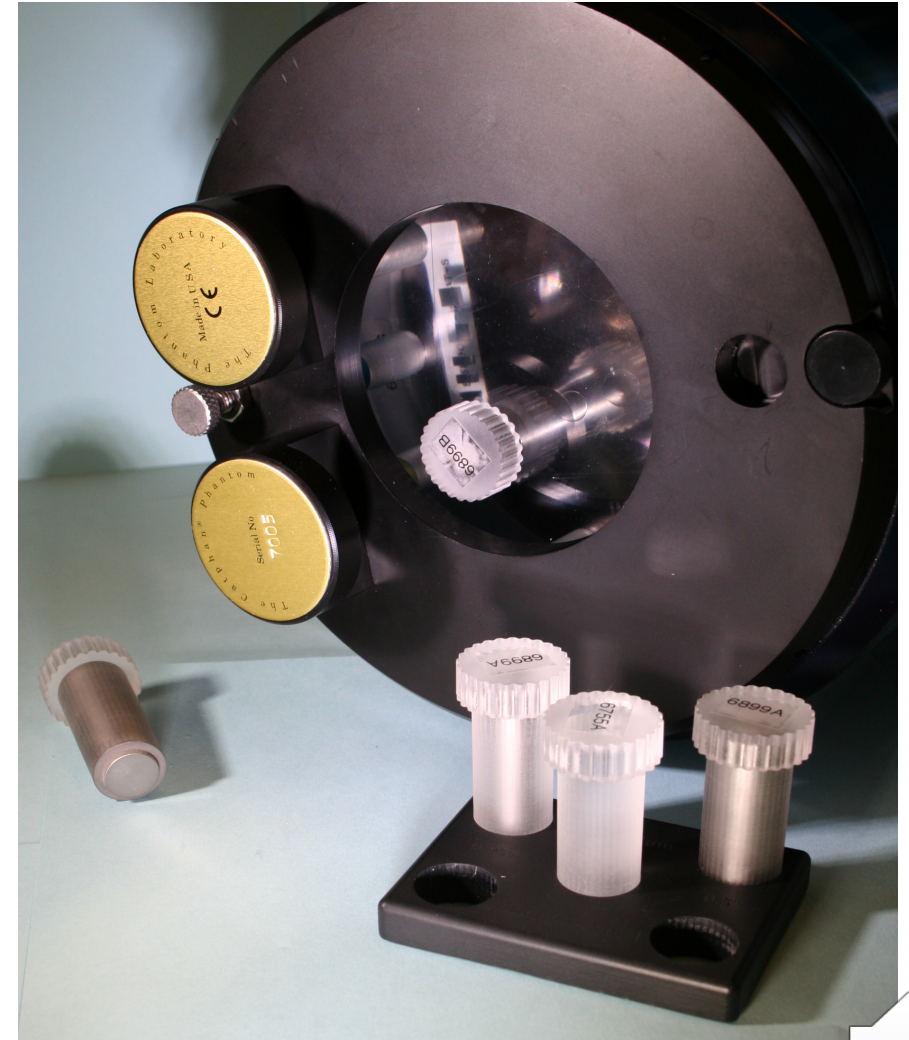


# Advanced Imaging Performance

Annuli are available in a range of sizes and in both round and oval shapes.



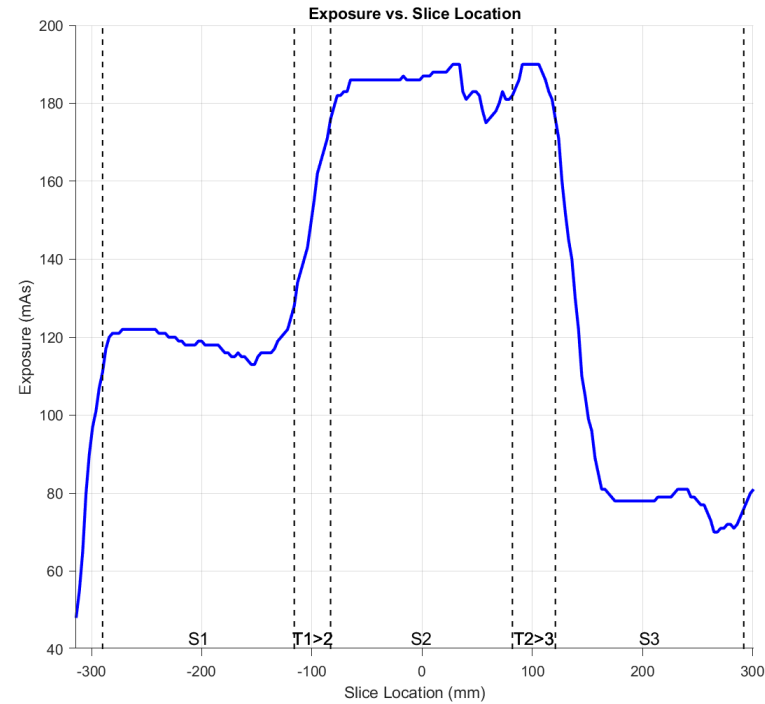
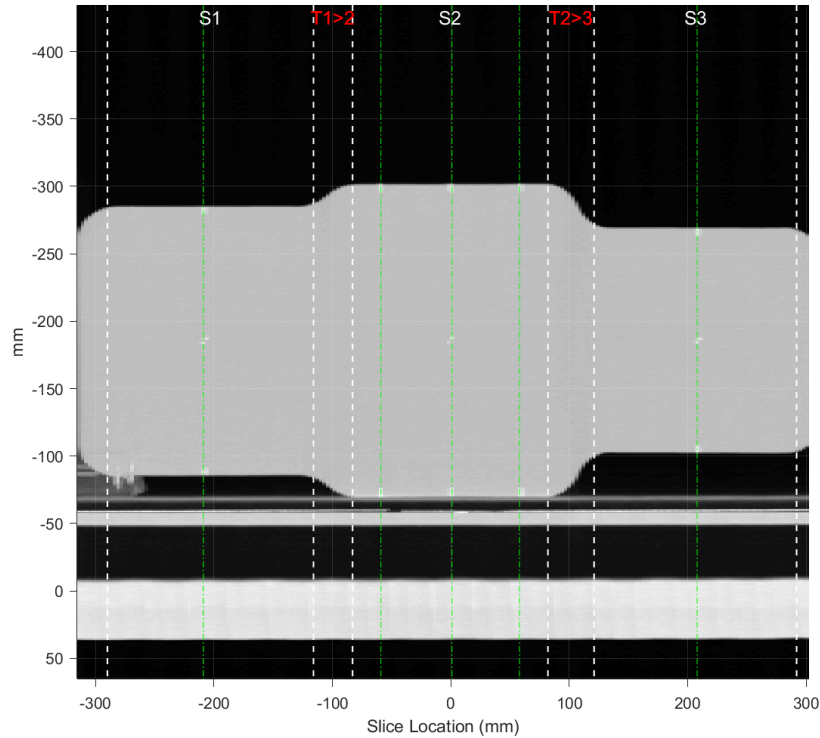
Catphan® 700 Metal Artifact Inserts



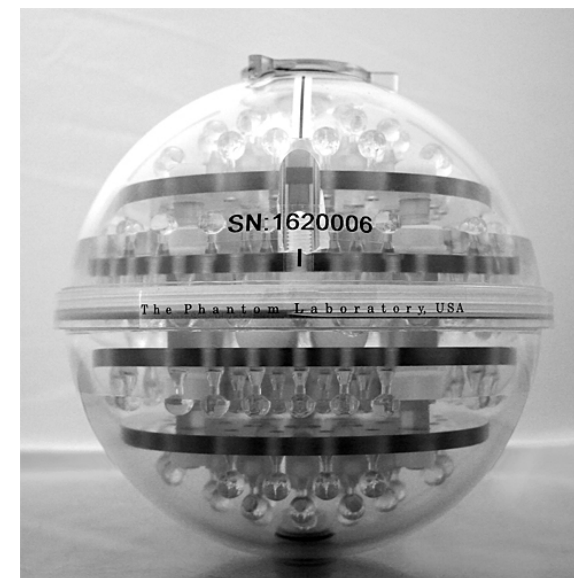
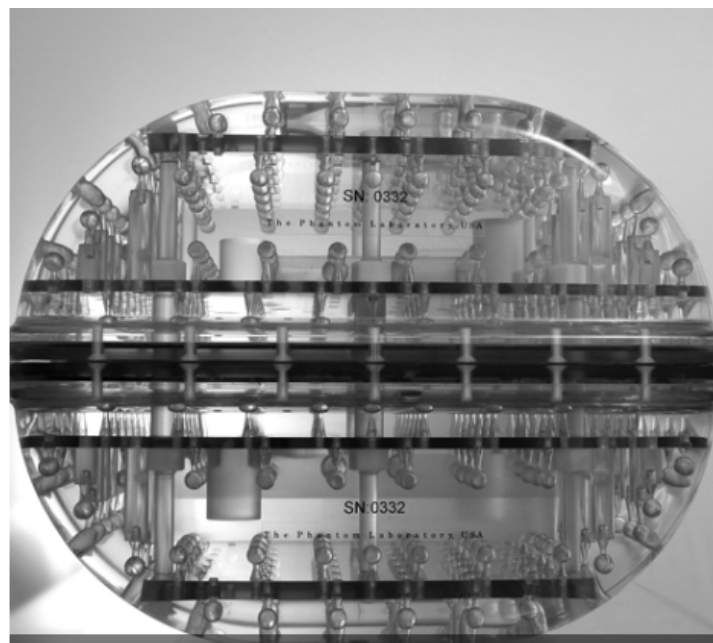
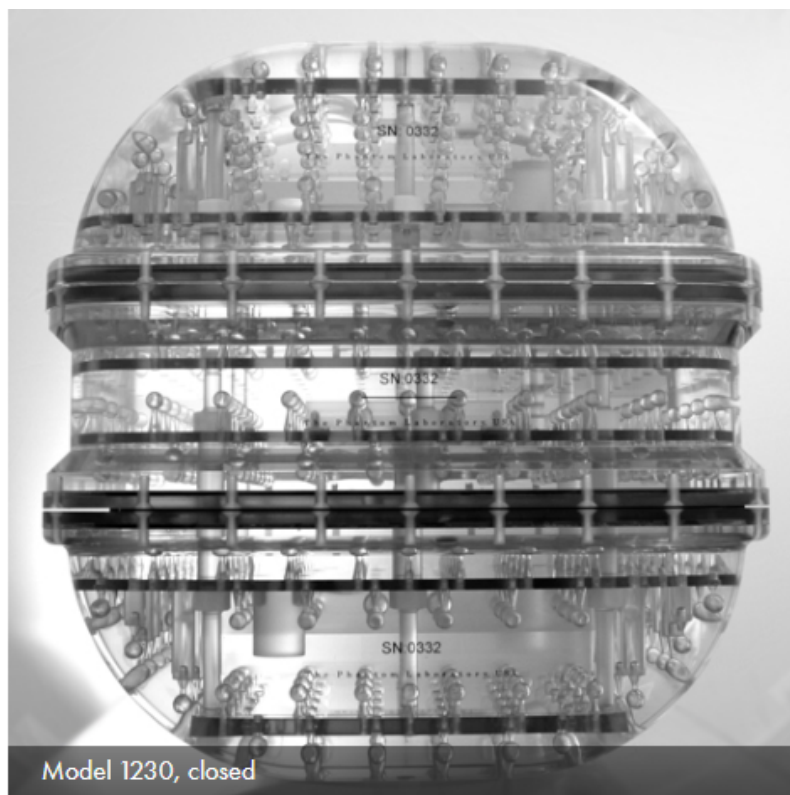


# Advanced Imaging Performance

The ATCM Phantom; for characterization of ATCM performance.



# The Magphan RT and S162 Phantoms

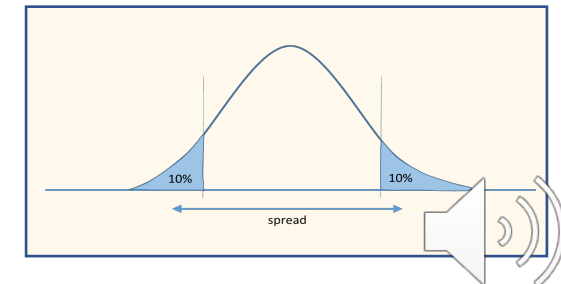
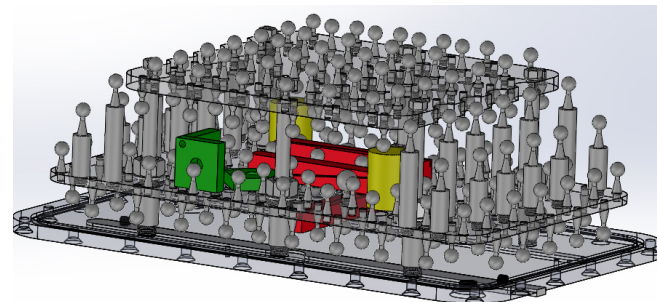
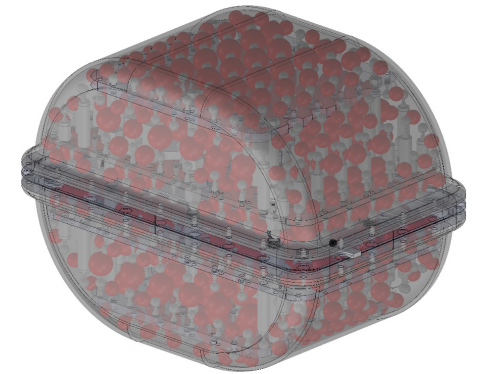
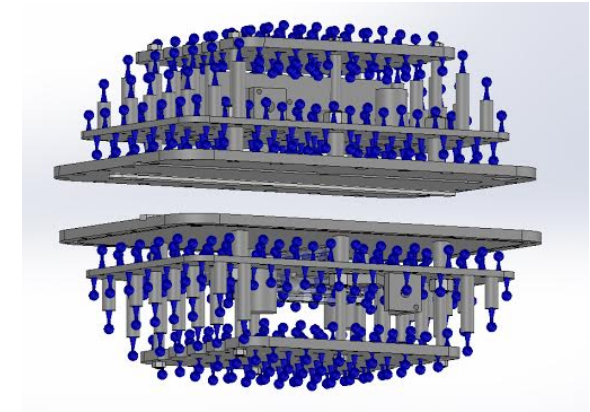


*Designed to address the particular needs of Radiation Therapy Planning*



# MR Quality Control Protocol for Radiation Therapy Planning

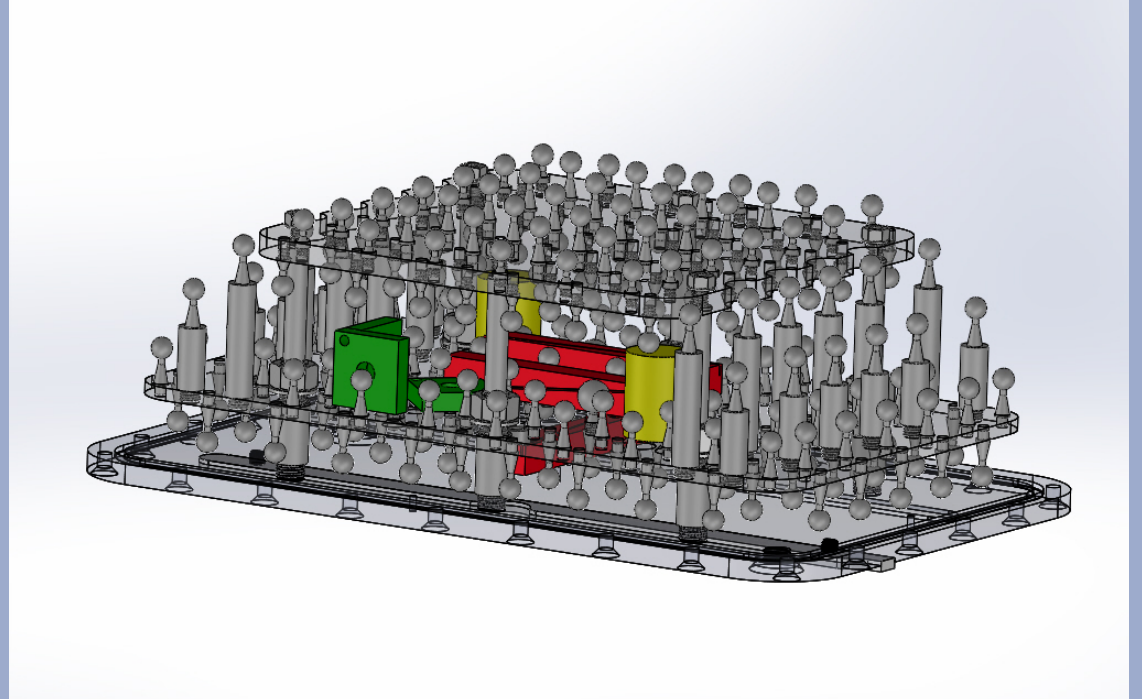
- Efficient to perform
- Easy to interpret by non-MRI specialists, deeper info available for specialists.
- Thorough – 3D measurements where possible
- Sensitive to many types of general scanner failures
- Sensitive to specific failures of importance in RTP (distortion)
- Sensitive to user and configurational errors



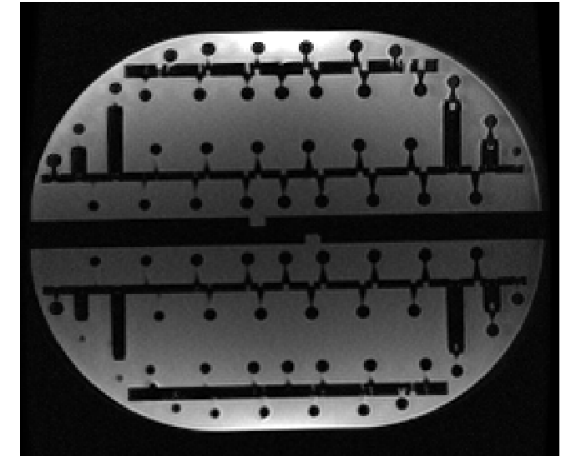
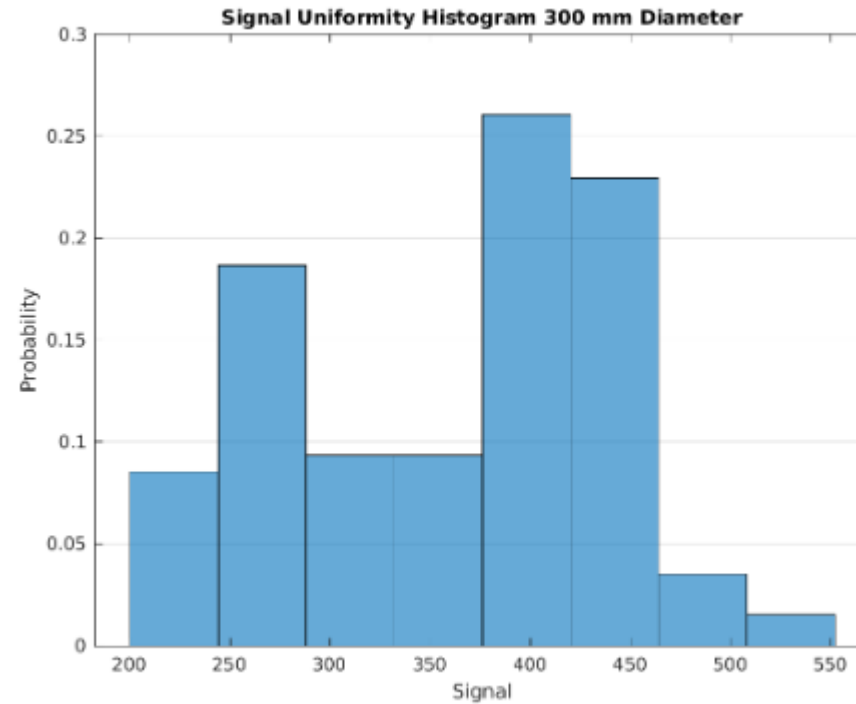
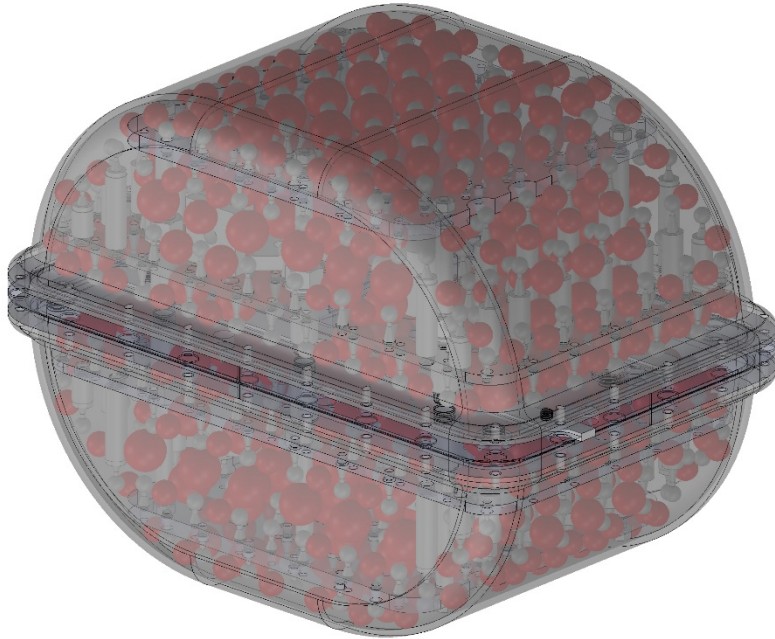


# Magphan<sup>®</sup>RT Measurements and Analysis

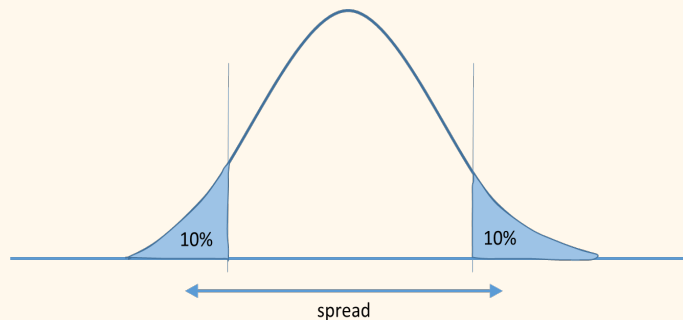
- **Geometric Distortion**
- **SNR**
- **Laser Alignment**
- Slice Thickness
- Resolution (MTF/PSF/ESF)
- Signal Uniformity



# Image Uniformity



Definition:



## Signal Uniformity Statistics Diameter 1

Series Description: G0HR 01242020

Diameter [mm]	Mean Signal	Normalized Standard Deviation	Normalized Spread
150	261	0.130	0.400

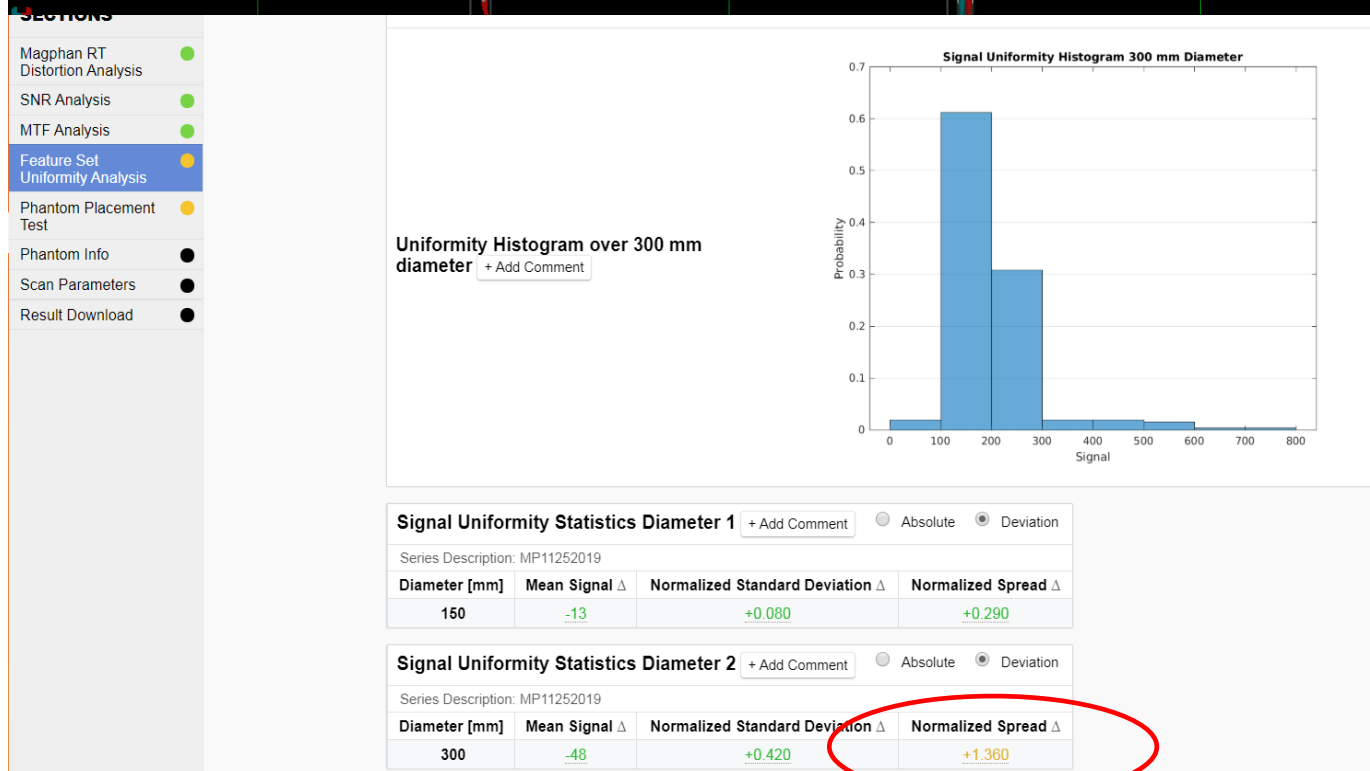
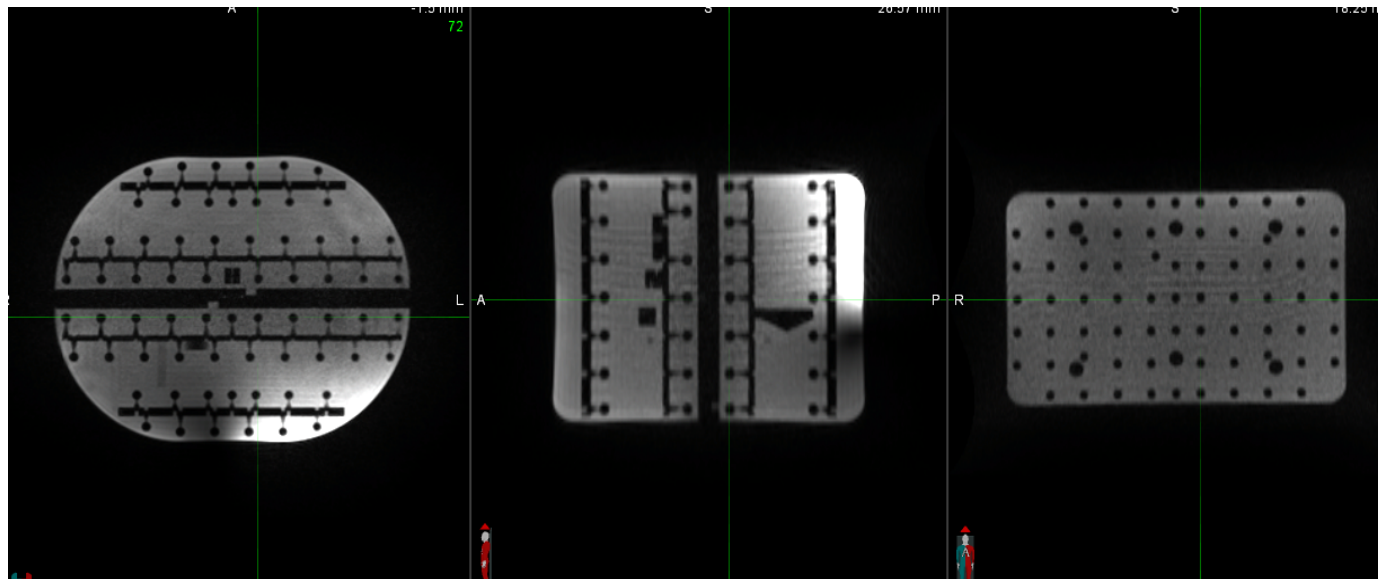
## Signal Uniformity Statistics Diameter 2

Series Description: G0HR 01242020

Diameter [mm]	Mean Signal	Normalized Standard Deviation	Normalized Spread
300	361	0.220	0.670



# Clinical Example



## Phased Array Failure

Courtesy of Dr. Yingli Yang, UCLA





# Smári Automated Image Analysis

Smári

Home

Review

Reports

Documents

Analysis

Manage

Help

Io Dev

Sign out

Collapse all

Expand all

SECTIONS

Geometry

Dose

Noise

Uniformity

Dose

Exposure Plot

Exposure vs. Slice Location

Exposure Statistics

Slice Location Start	Slice Location End	Median	Maximum	Minimum	Standard Deviation
-290	-116	119.00	128.00	111.00	3.16
-113	-86	152.00	171.00	134.00	13.65
-83	82	186.00	190.00	175.00	3.69
85	118	189.00	190.00	181.00	3.26
121	292	79.00	176.00	70.00	26.29

Uniformity and Noise

File name: 685886bb48c5d

Series description: 1.2mm 1pitch

Module ID: CTP712

Total collimation width: 40 mm

kVp: 120

mA: 315

Time: 1000 ms

Recon FOV:

210 mm recon filter

Scan mode: HELICAL MODE

CTDI volume: N/A mGy

Spiral pitch factor: 0.984

Images: 1.2mm 1pitch

Vertical profile and the corresponding fitted curve

Series description: 1.2mm 1pitch

Vertical profile and the corresponding fitted curve

Pixel intensity [HU]


Vertical distance from center [mm]

Raw profile

Uniformity



# Performance Monitoring and Benchmarking Tools



Home  
Review  
Reports  
Documents  
Analysis  
Manage  
Help

Collapse allExpand all

SECTIONS

Sensitometry

MTF

Low Contrast

Uniformity and Noise

Slice Thickness

Spatial Resolution and Orientation

Wave Analysis


← Back

Catphan Hospital → Aquilion Precision → Catphan 700

Save QA

Finalize QA

1. Sensitometry

 Air [HU]


Measured CT number of air

-994

☐ N/A

Show trends

+ Add comment

 Lung foam [HU]


Measured CT number of lung foam

-818

☐ N/A

Show trends

+ Add comment

 PMP [HU]


Measured CT number of PMP

-188

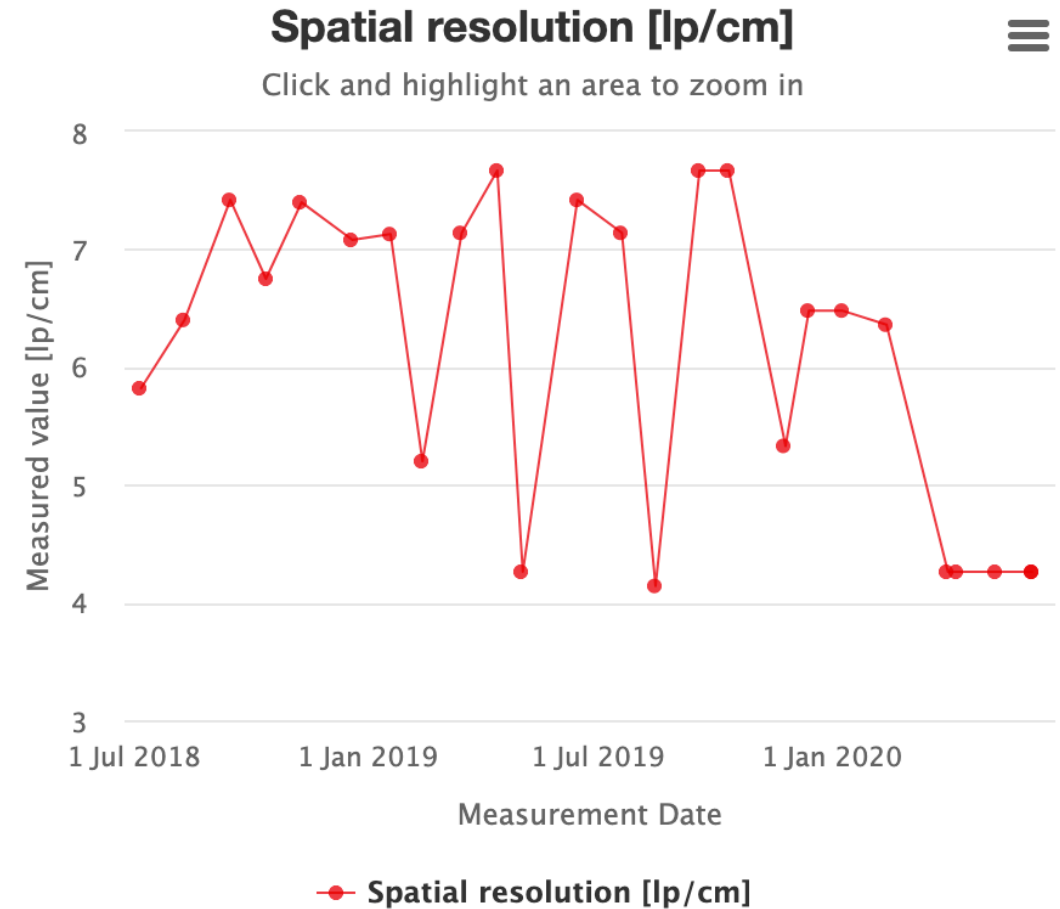
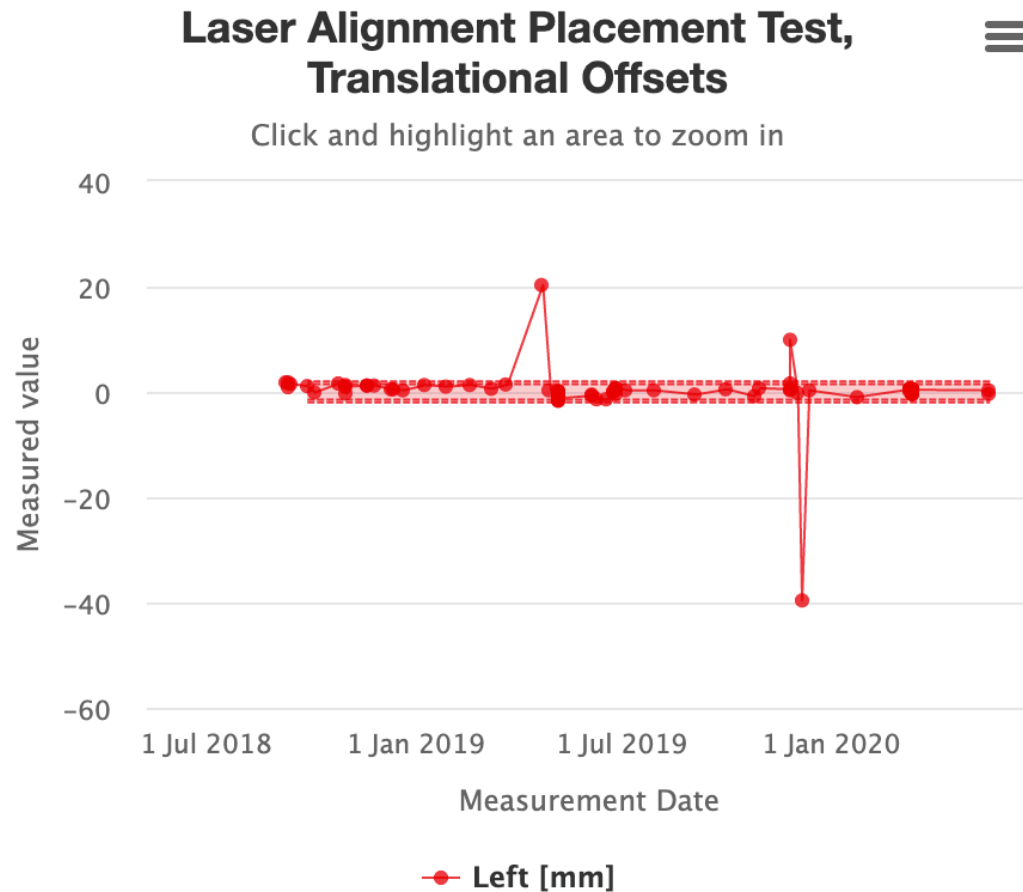
☐ N/A

Show trends

+ Add comment



# Longitudinal Data

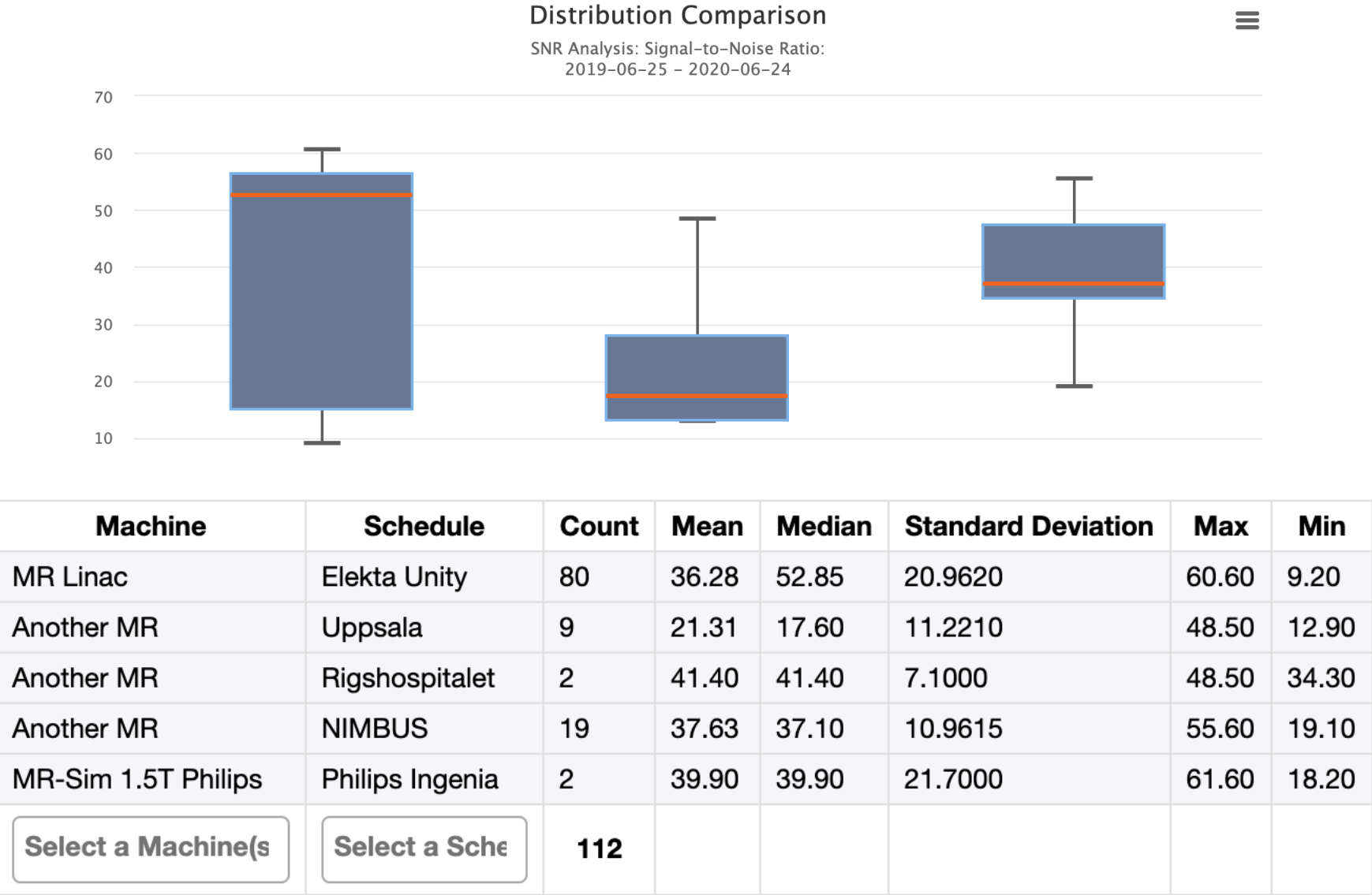


## Interactive longitudinal displays with filtering and data export tools





# Machine and Protocol Comparison Tools



# Thank you

[www.phantomlab.com](http://www.phantomlab.com)  
The Phantom Laboratory, Inc.

