



# **Maintenance of Certification**

## **Recent Changes**

Richard L. Morin, Ph.D., FACR  
Department of Radiology  
Mayo Clinic Florida  
Trustee, ABR



# **American Board of Radiology Mission**

**“To serve patients, the public, and the medical profession. . .”**

**“By certifying that its diplomates have acquired, demonstrated, and *maintained* a requisite standard of knowledge, skill, and understanding. . .”**

# Why MOC?

- **Demonstrates commitment to lifelong learning and self-assessment**
- **Allows the physician to self-direct own continuing education**
- **Results in continuous quality improvement**
- **State licensing boards & insurance companies are becoming more interested in MOC as a way to reach their goals**

# **MOC helps further development of the six key competencies....**

- **Medical knowledge**
- **Patient Care and Procedural Skills**
- **Interpersonal and Communication Skills**
- **Professionalism**
- **Practice-based Learning and Improvement**
- **Systems-based Practice**

**...through the four MOC components.**

- **Professional Standing**
- **Lifelong Learning and Self-assessment**
- **Cognitive Expertise**
- **Practice Quality Improvement**

## Evaluation Criteria for the Four MOC Components According to the Six General Competencies

	1. Professional Standing	2. Lifelong Learning and Self-assessment	3. Cognitive Expertise	4. Practice Quality Improvement (PQI projects)
1. Medical Knowledge	At least one valid state license or professional attestation in previous 5 years	At least 75 Category 1 CE, including 25 Self-Assessment CE (SA-CE)	Achieve a passing score on the ABR cognitive Exam.	<ul style="list-style-type: none"> <li>•Patient Safety</li> <li>•Double Reading</li> <li>•Practice Guidelines</li> </ul>
2. Patient Care and Procedural Skills	At least one valid state license or professional attestation in previous 5 years	CE with review of new techniques and protocols	Achieve a passing score on the ABR cognitive exam, which includes patient care content.	<ul style="list-style-type: none"> <li>•Patient Safety</li> <li>•Double Reading</li> <li>•Turnaround Time</li> <li>•Practice Guidelines</li> <li>•Referring Physician Survey</li> </ul>
3. Interpersonal & Communication Skills		Self-Assessment CE (SA-CE) with emphasis on communications		<ul style="list-style-type: none"> <li>•Patient Safety</li> <li>•Double Reading</li> <li>•Turnaround Time</li> <li>•Practice Guidelines</li> <li>•Referring Physician Survey</li> </ul>
4. Professionalism	At least one valid state license or professional attestation in previous 5 years	Self-Assessment CE (SA-CE) with content on professionalism	General questions about ethics and charter on professionalism	<ul style="list-style-type: none"> <li>•Practice Guidelines</li> <li>•Referring Physician Survey</li> </ul>
5. Practice-based Learning & Improvement		Specific CE and Self-Assessment CE (SA-CE) developed for practice-based learning and improvement	General questions about essential core knowledge and practice improvement principles.	<ul style="list-style-type: none"> <li>•Patient Safety</li> <li>•Double Reading</li> <li>•Turnaround Time</li> <li>•Practice Guidelines</li> <li>•Referring Physician Survey</li> </ul>
6. Systems-based Practice		Specific CE and Self-Assessment CE (SA-CE) developed for systems-based practice	General questions about CQI content.	<ul style="list-style-type: none"> <li>•Patient Safety</li> <li>•Double Reading</li> <li>•Turnaround Time</li> <li>•Practice Guidelines</li> <li>•Referring Physician Survey</li> </ul>

# **Significant Improvements for 2013**

**Certificates have no end date**

**Continuous involvement**

**Annual “Look-back”**

- **Detailed in 2016**

**Much improved website**

- **Easier to enter information**
- **Makes audits easier**
- **Better reminders for diplomates**

# Continuous Certification – Verified with “Look-backs”

Example CE credit look-back

**Are there 75 hours of CE credit, including 25 hours of SA-CE credit, in the last 4 years?\***

2013

2014

2015

2016

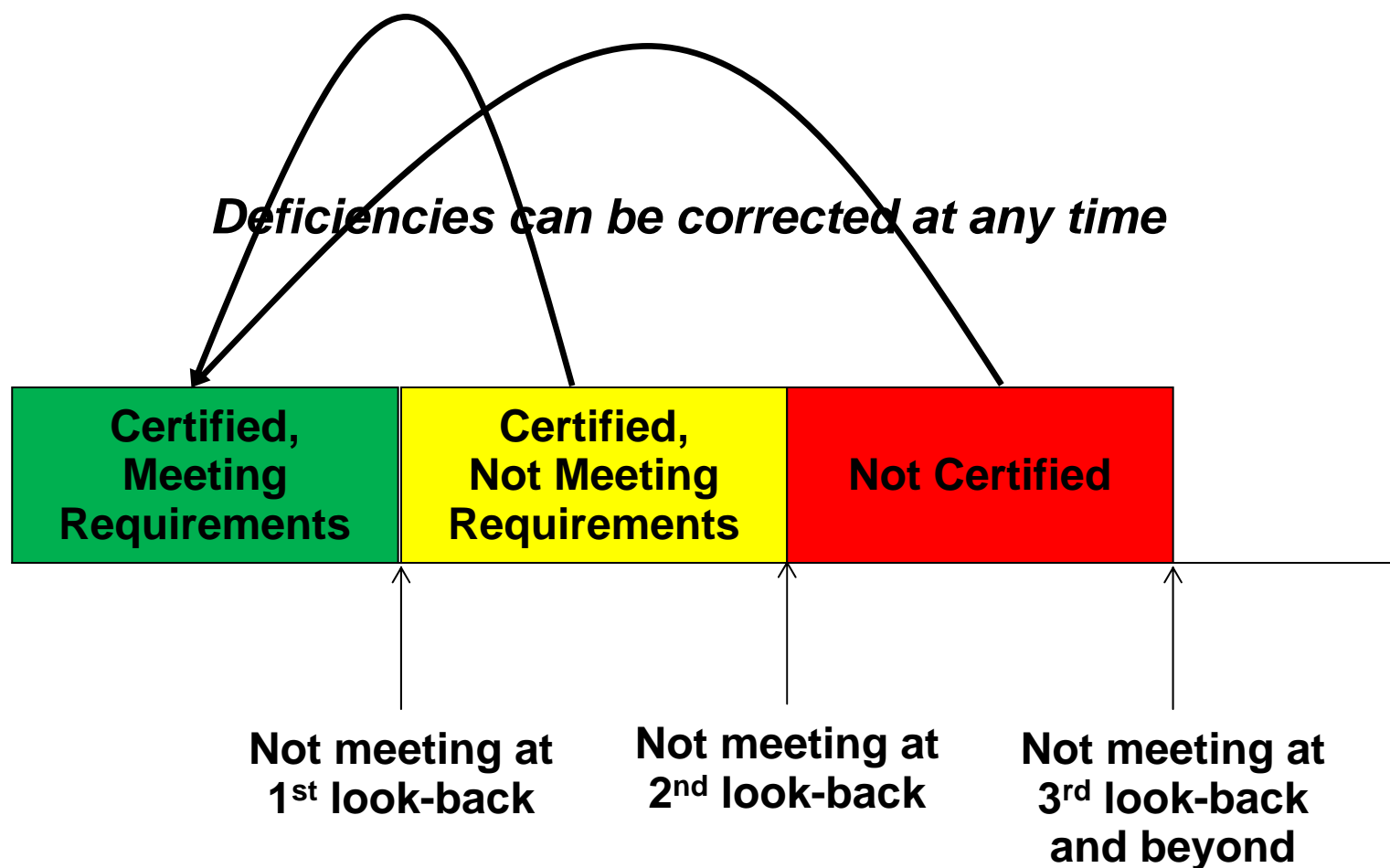
Continuous Certification  
Begins

Look-backs are in March  
First full look-back is in 2016

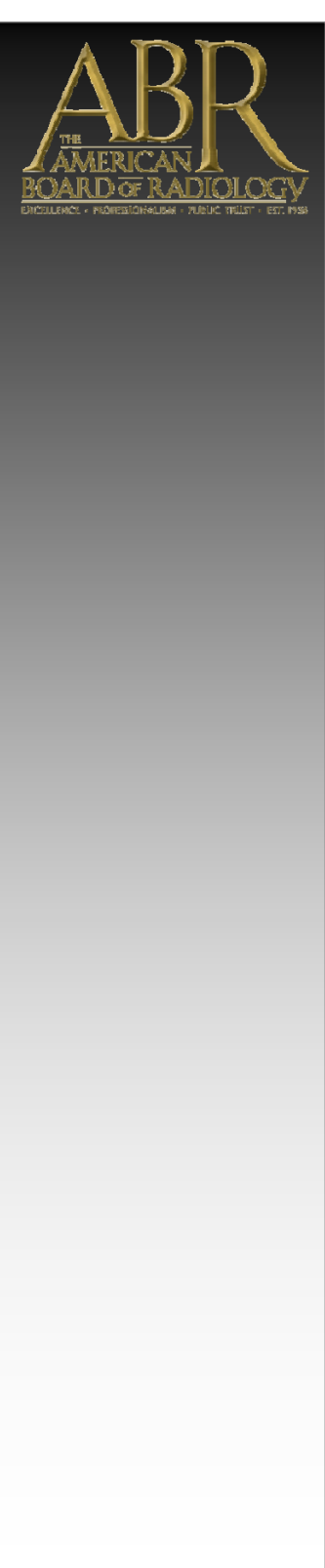
\*4-year look-back in first cycle (2016),  
followed by 3-year look-backs from then on



# What happens if there is a deficiency?



Reported on ABR and ABMS Websites



# The Details

# Part 1 – Professional Standing

## State License

- Annual look-back over past 5 years

OR

## Professional Attestation

- Annual look-back over past 5 years
- Attestation Letters
  - Certified Physicist and
  - ABR-certified Physician

*Simplified reporting via myABR*

# Part 2 – Lifelong learning and professional development

## CE Credit

- 4-year look-back in first cycle (2016), followed by 3-year look-backs from then on
- 75 hrs of CE credit
  - 25 must be Self Assessment Continuing Education (SA-CE)

## Quality Improvement SDEP

- 10-year look-back
- 4-yr look-back in first cycle, followed by 10-yr look-backs from then on

# What is SA-CE?

- **SAM's**
- **Enduring Materials CME**

## **Sources for SAM's**

- **AAPM Annual and Spring Meetings**
- **RSNA and ASTRO Meetings**
- **AAPM on-line learning center**
- **ABR/ACR/RSNA/AAPM/ASTRO/ARR/AR  
S Online Modules on Ethics and  
Professionalism**

# What is Enduring CME?

- They provide an assessment of the learner that measures achievement of the educational purpose and/or objective(s) of the activity with an established minimum performance level; examples include, but are not limited to, patient-management case studies, a post-test, and/or the application of new concepts in response to simulated problems.
- They communicate to the participants the minimum performance level that must be demonstrated in the assessment in order to successfully complete the activity for *AMA PRA Category 1 Credit*<sup>™</sup>.
- They provide a reference to appropriate bibliographic sources to allow for further study.

***The key factor is that there is a post-test with a required score for successful completion.***



## **Sources of SA-CE**

**The AAPM On-line Learning Center is an excellent example but there are other examples available from ASTRO, RSNA, SMINM and ACR as well as many other societies and journals.**

**Because of the wealth of SA-CE that is available in the form of SAMS and the AAPM on-line learning center all the SA-CE requirements can be obtained from the AAPM.**

# Part 3 – Cognitive Expertize

## MOC Exam

- 10-yr look-back

**Exam is 20% basic and 80% current material.  
A good study guide is available online.**

# Part 4 – Practice Quality Improvement Project

## **Complete One PQI Project**

3-yr look-back\*

**The first project must be completed by the 4th year, and one project must be completed every three years afterward.**

# **Quality Improvement Self-Directed Educational Project (QI-SDEP)**

**Physicists have significant skills to contribute:**

- **knowledge of informatics**
- **quantitate analysis of data**
- **statistical process control**

**These skill can be very helpful to institutions but the physicist must be able to apply them to PQI projects**

# Improving Physicist Skills in PQI

- **Reading and self study**
- **Online courses**

Formal

Society based

- **Formal courses**

Technical schools

Colleges and Universities

# **Documenting Physicist Knowledge**

- **PQI Related SDEP with a 10 year look-back**
  - First is in year 4.
- **This allows the physicist to obtain up to 15 SA-CE hrs. for learning about new developments in quality assurance**



# **Component 4 – Practice Quality Improvement Projects**

## **PQI projects must:**

- Be practice-relevant

- Include focus on patients – care & safety

- Use QI principles: plan-do-study-act

- Generate an improvement plan

- Implement the plan

- Measure the effectiveness over time

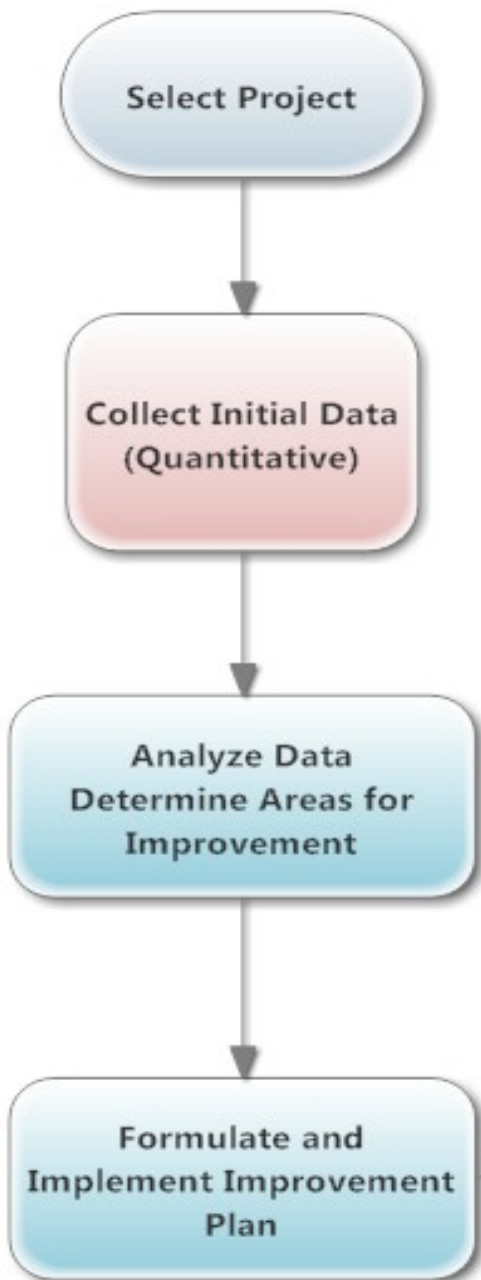
**Opportunity for integrated, practical physics**

# **PQI Projects**

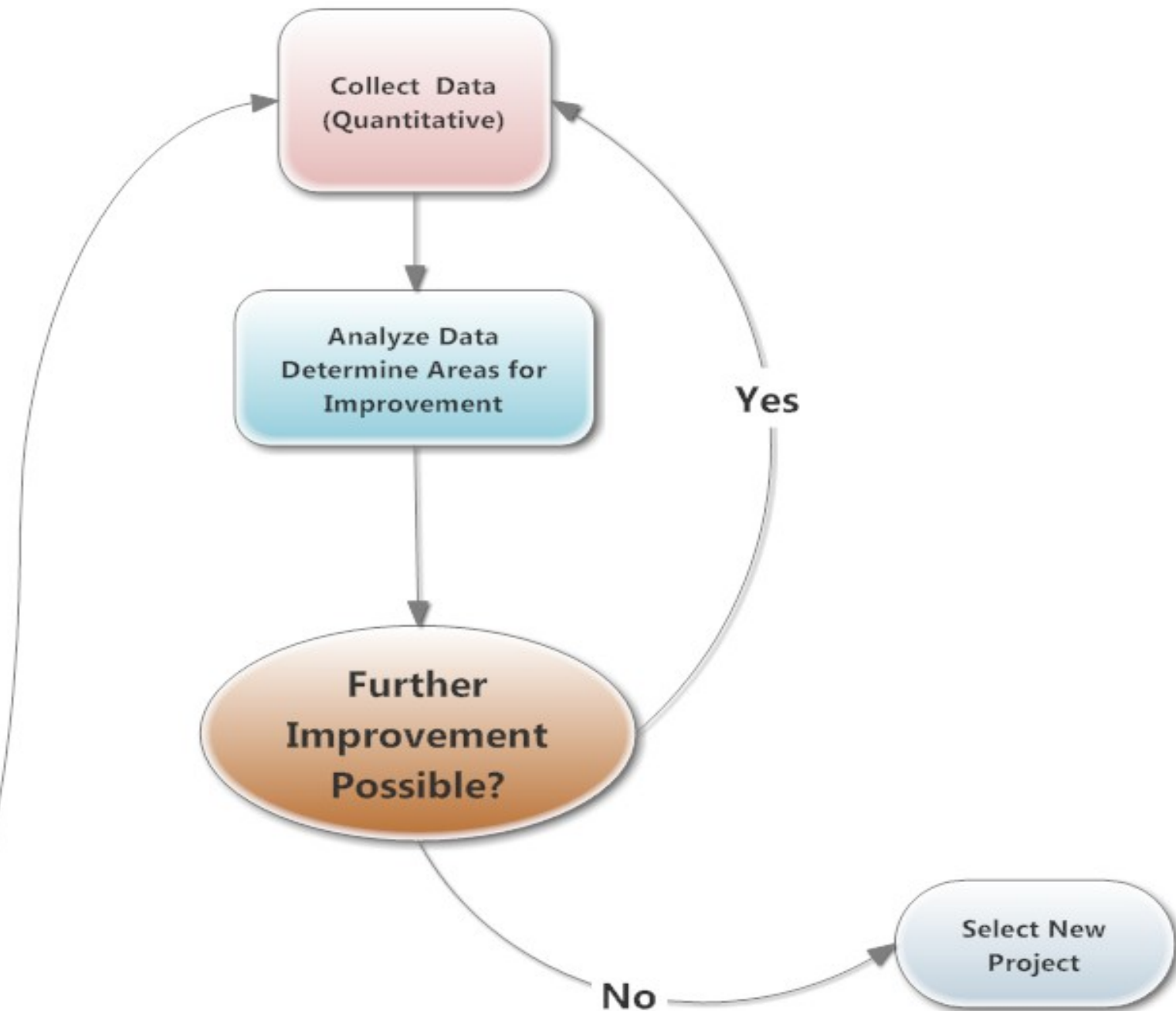
**Must have completed a project in last 3 years (4 years for first cycle)**



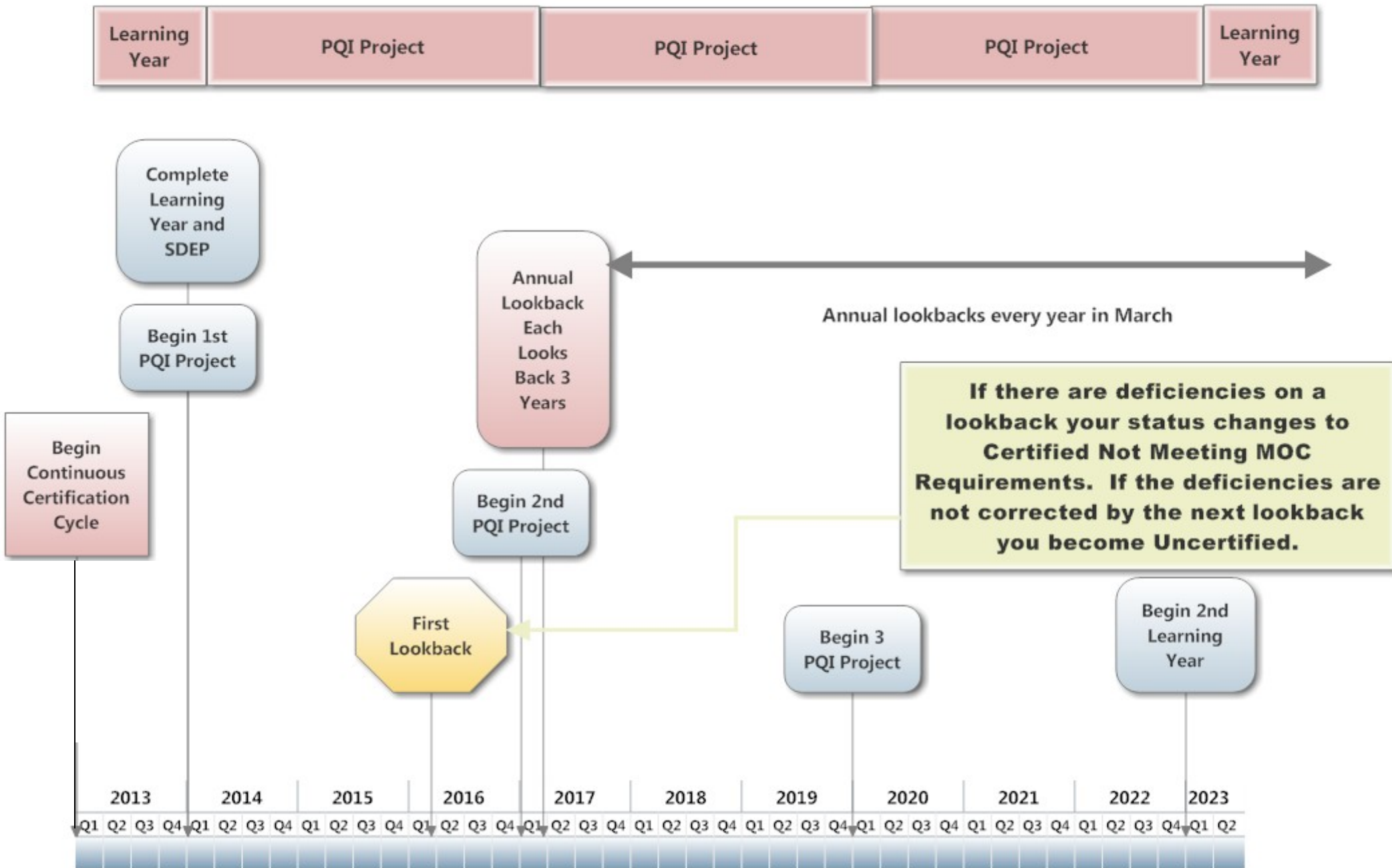
## Initial Cycle



## Subsequent Cycles



## Outline of Part 4 Continuous Certification for Medical Physicists





# Continuous Certification Summary

<i><b>Element</b></i>	<i><b>Compliance Requirement</b></i>
Licensure	At least one valid license or professional standing attestation in previous 5 years
CE	At least 75 Category 1/CAMPEP CE in previous 3 years
Self-Assessment CE (SA-CE)	At least 25 of the 75 CE in previous 3 years must be Self-Assessment CE (SA-CE)
Exam	Passed MOC exam in previous 10 years
PQI	Completed at least 1 PQI project in previous 3 years And 1 QI SDEP in last 10 years
Fees	Current with MOC fees at any time during the past 3 years



