

National Science Foundation: Funding opportunities in healthcare

Edwin Romeijn

Program Director
National Science Foundation

2013 AAPM Annual Meeting
Indianapolis, August 7, 2013



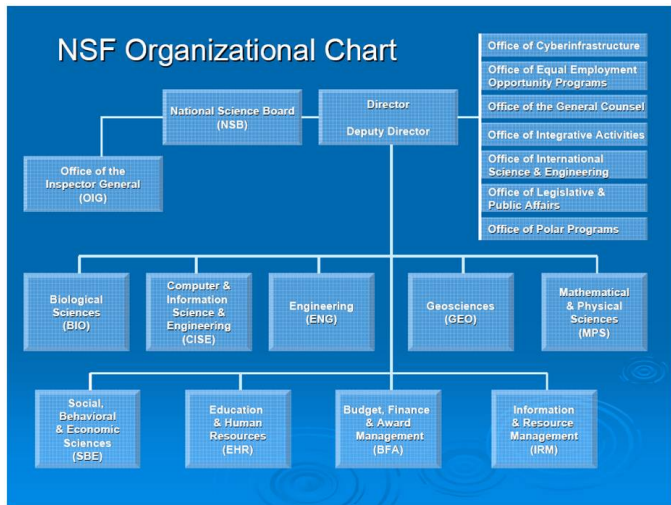
Outline

- 1 General overview
 - NSF structure
 - Funding mechanisms

- 2 Relevant programs

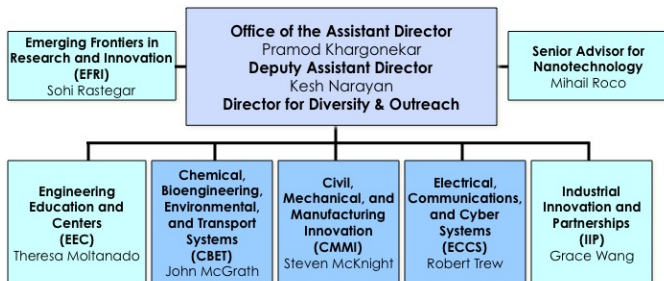


NSF organizational chart

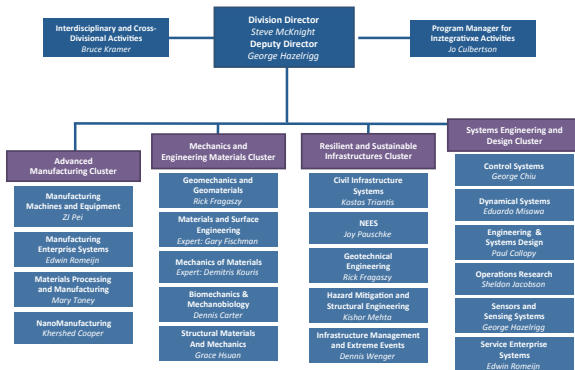


Directorate for Engineering

Directorate of Engineering



Division of CMMI



Main funding mechanisms

- *Unsolicited*
 - Submission windows September 1 – October 1 and January 15 – February 15 (in CMMI)
- *GOALI* (Grant Opportunities for Academic Liaison with Industry)
 - Submitted as and reviewed with unsolicited proposals
- *Workshops and Conferences*
- Special initiatives
 - Often cross-disciplinary



Relevant programs

Directorate of Engineering

- Service Enterprise Systems
 - operations
 - patient scheduling
 - workflow
 - decision making/treatment
 - treatment modality choice
 - treatment plan optimization
 - policies and incentives
 - reimbursements



Relevant programs

Directorate of Engineering

- Manufacturing Enterprise Systems
 - Quality control and engineering
 - Reliability
 - Maintenance
- Decision, Risk, and Management Science
 - Decision making; models that explicitly incorporate human behavior
- Biomedical Engineering and Engineering Healthcare



Relevant programs

Directorate of Computer and Information Science and Engineering

- Imaging, image reconstruction
- BigData

Directorate of Biological Sciences

- Biological and Computing Shared Principles (jointly with CISE)
- Molecular and Cellular Biosciences



Smart and Connected Health (SCH)

- Goal:
 - Innovative approaches that support the transformation of healthcare from
 - *reactive and hospital-centered to*
 - *preventive, proactive, evidence-based, person-centered, and focused on well-being rather than disease*
- NSF/NIH Interagency cooperation
 - First round of submissions now being reviewed by NSF
- Next deadlines:
 - Exploratory proposals:
October 10, 2013 + annually thereafter
 - Integrative proposals:
December 10, 2013 + annually thereafter



Conclusion

- Feel free to contact me with any questions!

eromeijn@nsf.gov

