

ABR Update

Initial Certification
Jerry Allison, Ph.D.

Why do we have MOC?
Don Frey, Ph.D.

How do we comply with MOC requirements?
Geoff Ibbott, Ph.D.

American Board of Radiology Mission

**“To serve patients, the public, and
the medical profession. . .”**

**“by certifying that its diplomates
have acquired, demonstrated, and
maintained a requisite standard of
knowledge, skill, and
understanding. . .”**

ABR Representation at AAPM 2013

Physics Trustees

Jerry Allison, Ph.D. (Nuclear MP)

Geoffrey Ibbott, Ph.D. (Therapeutic MP)

Tony Seibert, Ph.D. (Diagnostic MP)

Executive Director

Gary Becker, M.D.

Associate Executive Director (Physics)

Don Frey, Ph.D.

Director of Communications and Editorial Services

Donna Breckenridge, M.A.

Co-Director, Certification Services

David Laszakovits, M.B.A.

Exam Registration Coordinator

Michelle Brugger

ABR at AAPM 2013

Visit Booth 110!

Initial Certification

Jerry D. Allison, Ph.D.
Trustee, ABR

Outline

- **Current Requirements**
- **Medical Physics Training**
 - Didactic Education
 - Clinical Education
- **Nature of Exams**
- **Changes to Exams**
 - Part 1: General & Clinical
 - Part 2
 - Part 3 – Oral
- **Pass Rates**
- **Time Limits - Board Eligible**
- **Additional Certificates**

Medical Physics Training

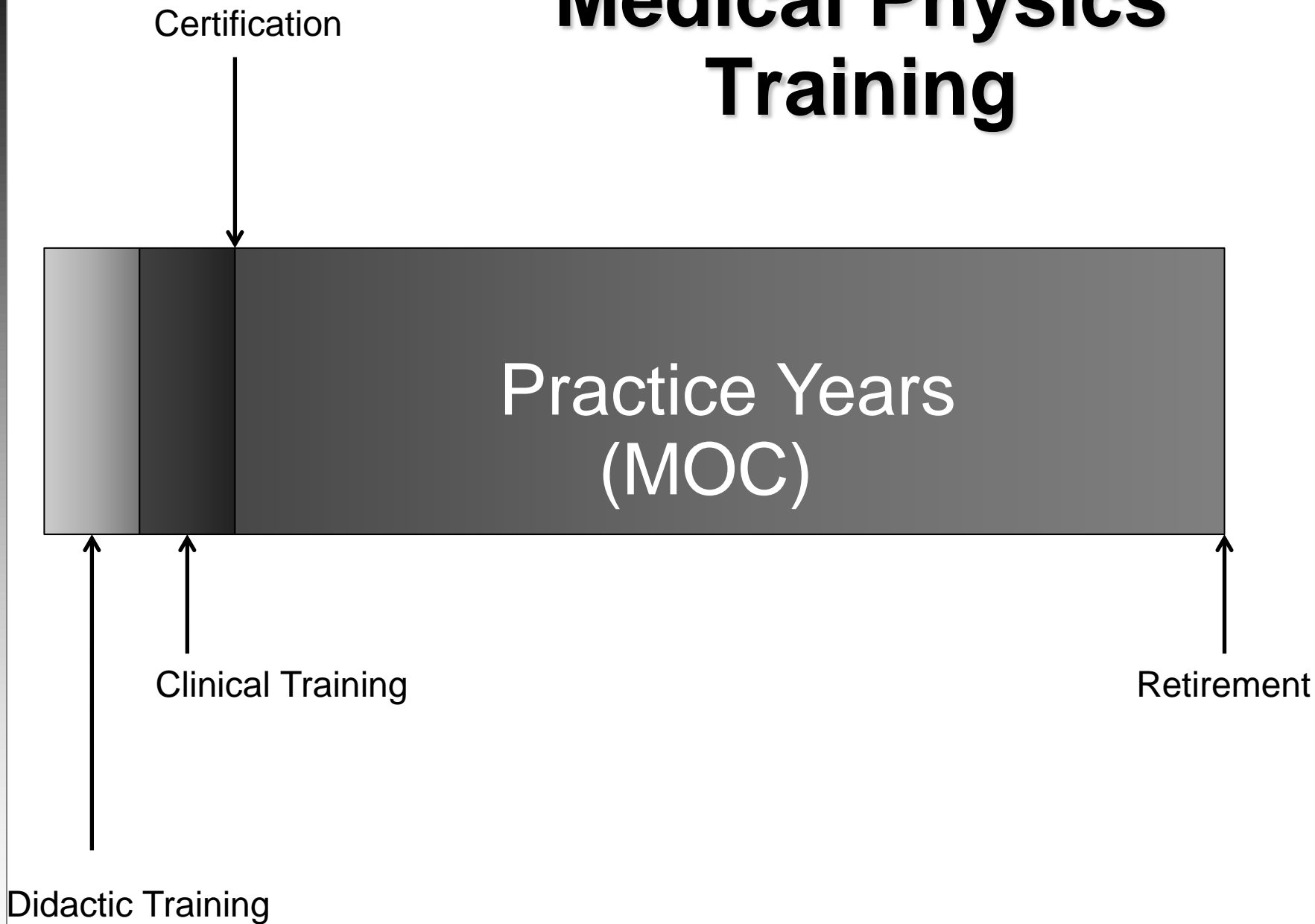
Increasing Standardization

Medical Physics as a Profession

Standardized training is a key component of a profession.

- **Physicians**
- **Lawyers**
- **Accountants**
- **Actuaries**
- **Architects**
- **Dentists**
- **Engineers**
- **Nurses**
- **Teachers**

Medical Physics Training



Major Components



Didactic Education



Clinical Education

Major Components

Didactic Education
2012: CAMPEP accredited
educational program

Clinical Education

Major Components

Didactic Education
2012: CAMPEP accredited
educational program

Clinical Education
2014: CAMPEP residency

Current Requirements

Current Requirements

- **Applicants for the Part 1: General and Clinical Exams must be enrolled in (or graduates of) one of the following CAMPEP Accredited Programs:**
 - Graduate Education Program
 - Certificate Program
 - Residency

The candidate must be in good standing, and the enrollment must be attested to by the program director.

Current Requirements

Part 2 Exams are given at Pearson View
Centers throughout the USA and Canada
Oral Exams are given in a central location

Applicants for the Part 2 Exam must have completed a CAMPEP-accredited Residency

Applicants for the Oral Exam must have passed the Part 2 Exam.

Candidates from Previous Years

ABR usually allows candidates to finish under the requirements that were in place when they began.

There are exceptions, but ABR usually gives 1-5 years of notice before a change in requirements takes effect.

Candidates from Previous Years

Candidates from 2013 and earlier can still use the “clinical experience” pathway.

Candidates from 2011 and earlier do not require a CAMPEP-accredited education.

Nature of Exams

Exams are “criterion referenced.”

Everyone who meets the “standard” passes.

In principle, everyone could pass or fail

This can be compared to “norm referenced,” where the purpose of the test is to rank the participants’ scores.

How Are Criteria Determined?

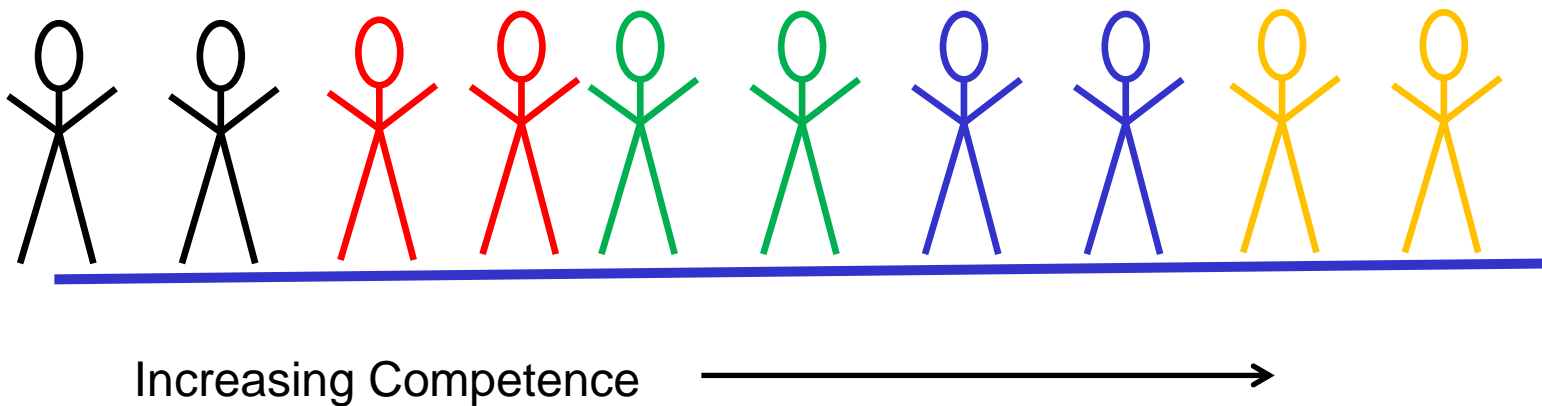
- **Expert Analysis**
- **Practice Surveys**
- **Professional Guidelines**

Passing Score

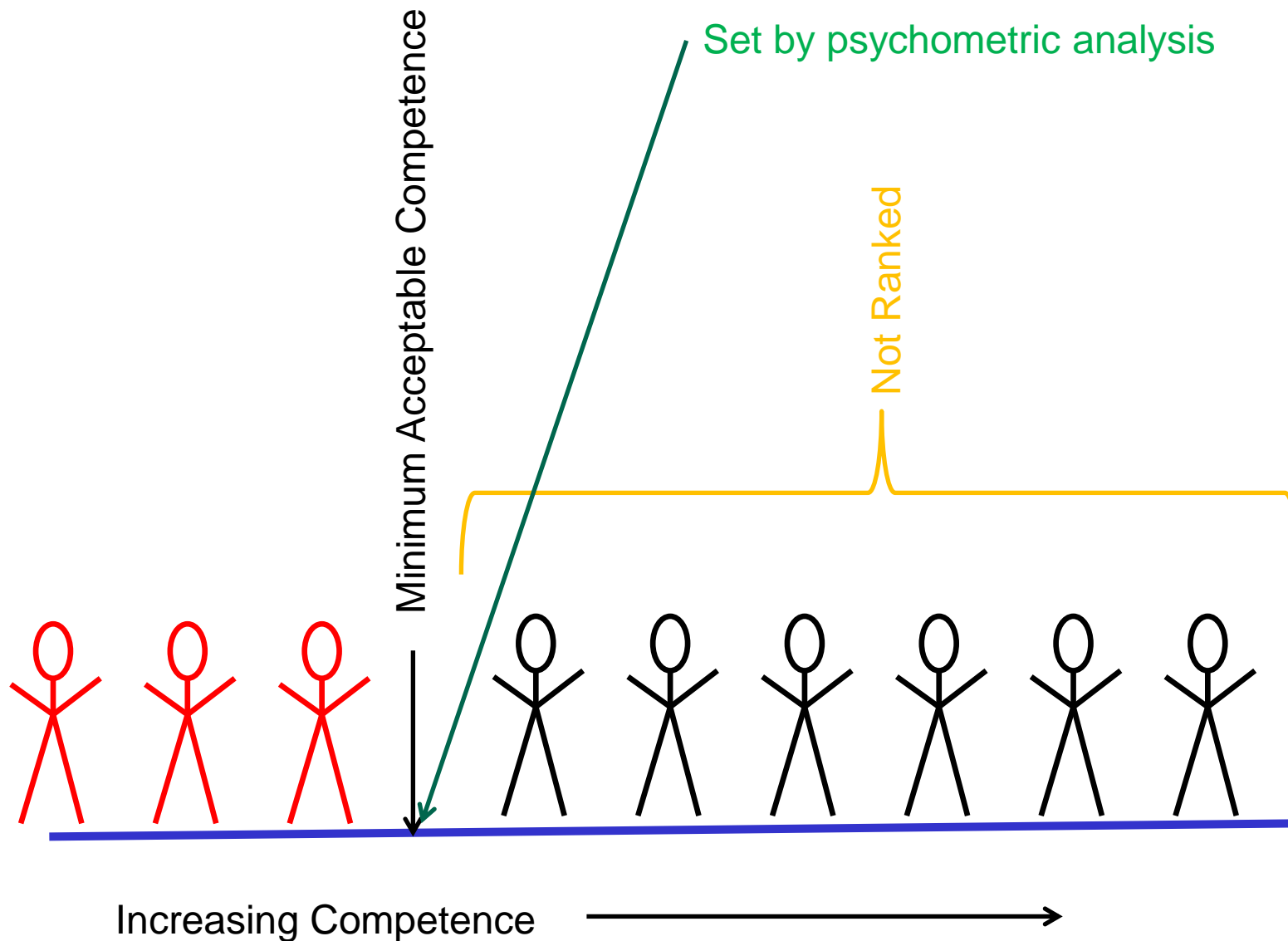
Set by psychometric analysis

Norm Referenced

May not be a passing score.



Criterion Referenced



Examples

- **Pure Criterion Referenced**
 - Board Certification
- **Pure Norm Referenced**
 - Scholastic Aptitude Test
- **Mixed**
 - Typical College Grades (A>B>C>D>F)

Changes in the Exams

Part 1: Clinical Exam

In 2014 the number of questions will increase to 75 from 60.

The amount of time for the exam will increase by 30 minutes.

Changes in the Exams

Medical Physics Initial Certification (2014)

Exam	Questions	Time
Part 1: General & Clinical	80 + 75	6 hrs
Clinical Only	75	1.5 hrs
Part 2	80	4.5 hr
Orals	25	2.5 hr
Note: Question numbers will vary slightly		

Part 1 and Part 2

No expected changes in organization or content

List of Commonly Used Constants

Beginning this year, a list of commonly used constants and physical values will be provided for Initial Certification candidates for Parts 1 and 2.

This reflects common practice for medical physicists, where constants are readily available.

See <http://www.theabr.org/ic-rp-calc>.

Orals

New location

**Revised categories for Diagnostic
Medical Physics (DMP) and
Nuclear Medical Physics (NMP)**

Location of Orals

- **Orals move to Dallas in 2015.**
- **June 8 -12**

Categories and Content

The exam has a focus on clinical medical physics.

The overall content of the orals will not change.

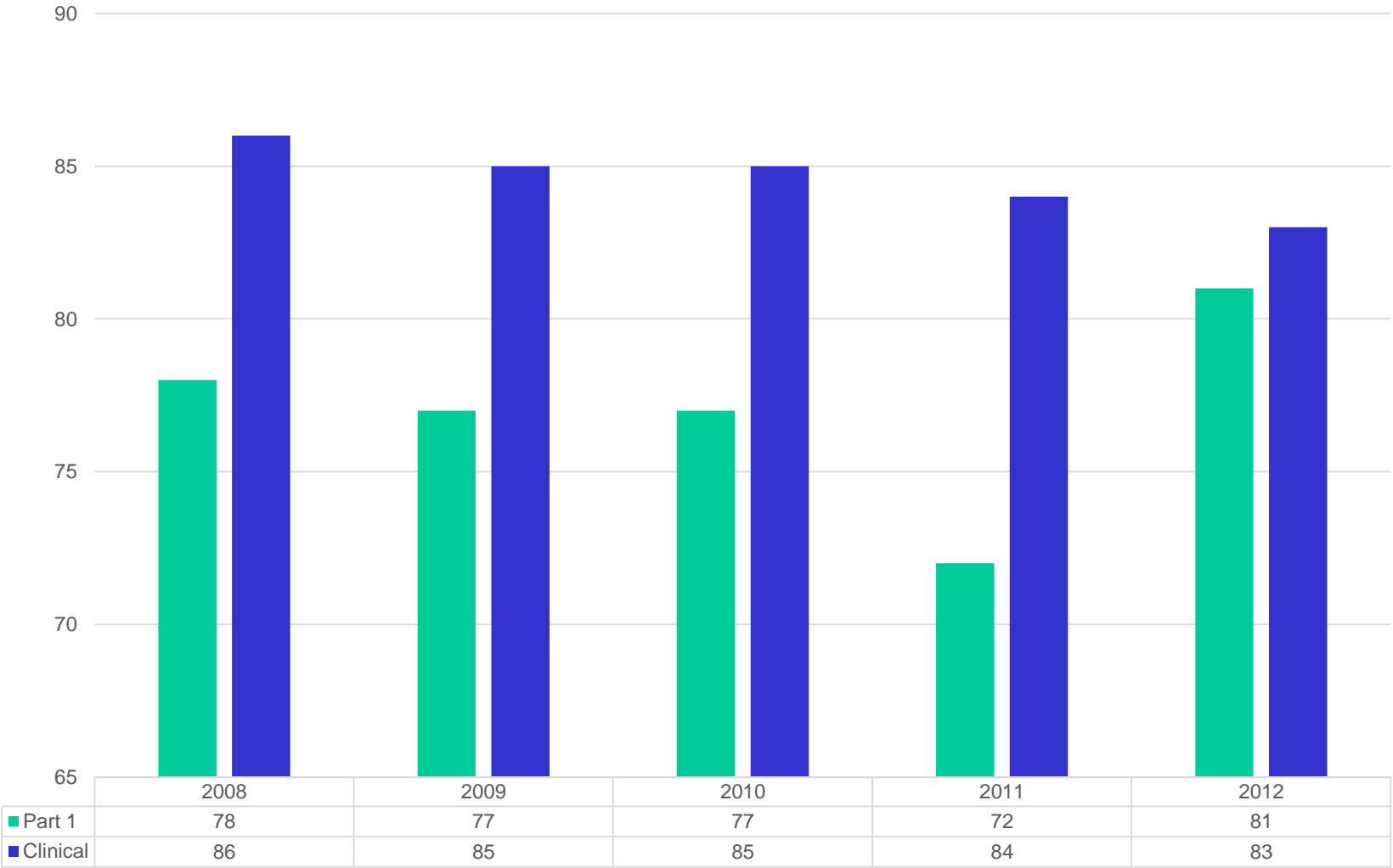
The DMP and NMP categories will be reorganized starting in 2015.

New Oral Categories

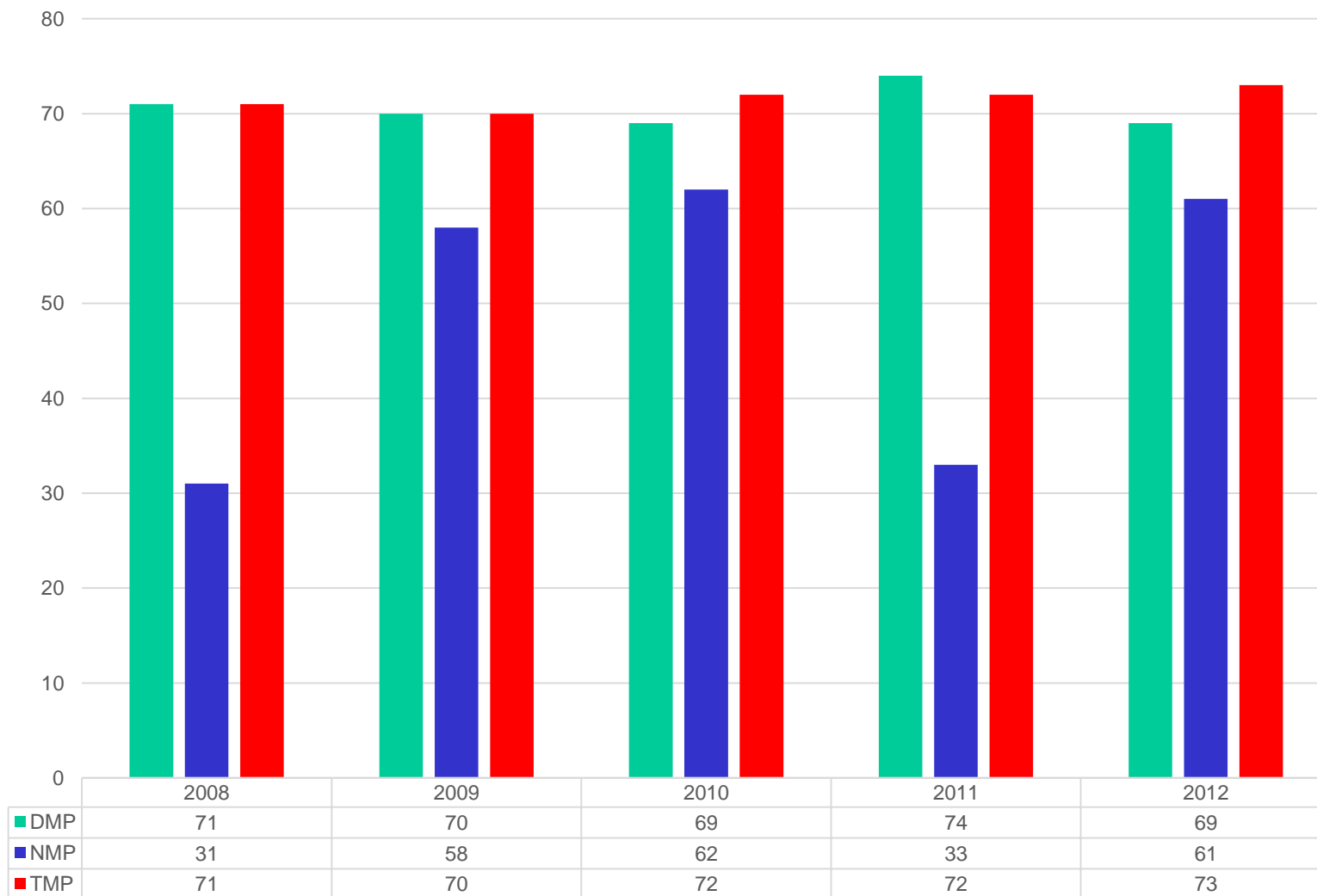
	DMP	NMP	TMP
Category 1	Radiography, Fluoroscopy, and Interventional Radiology	SPECT & hybrids, including gamma cameras	Radiation Protection and Patient Safety
Category 2	Computed Tomography	Radiation Protection	Patient-related Measurements
Category 3	Non-ionizing Techniques – MRI and Ultrasound	PET & hybrids	Image Acquisition Processing & Display
Category 4	Shielding, Radiation, and Protection	Radiation Measurements	Calibration, Quality Control, and Quality Assurance
Category 5	Radiation Dosimetry and Patient Safety	Clinical Procedures	Equipment

Pass Rates

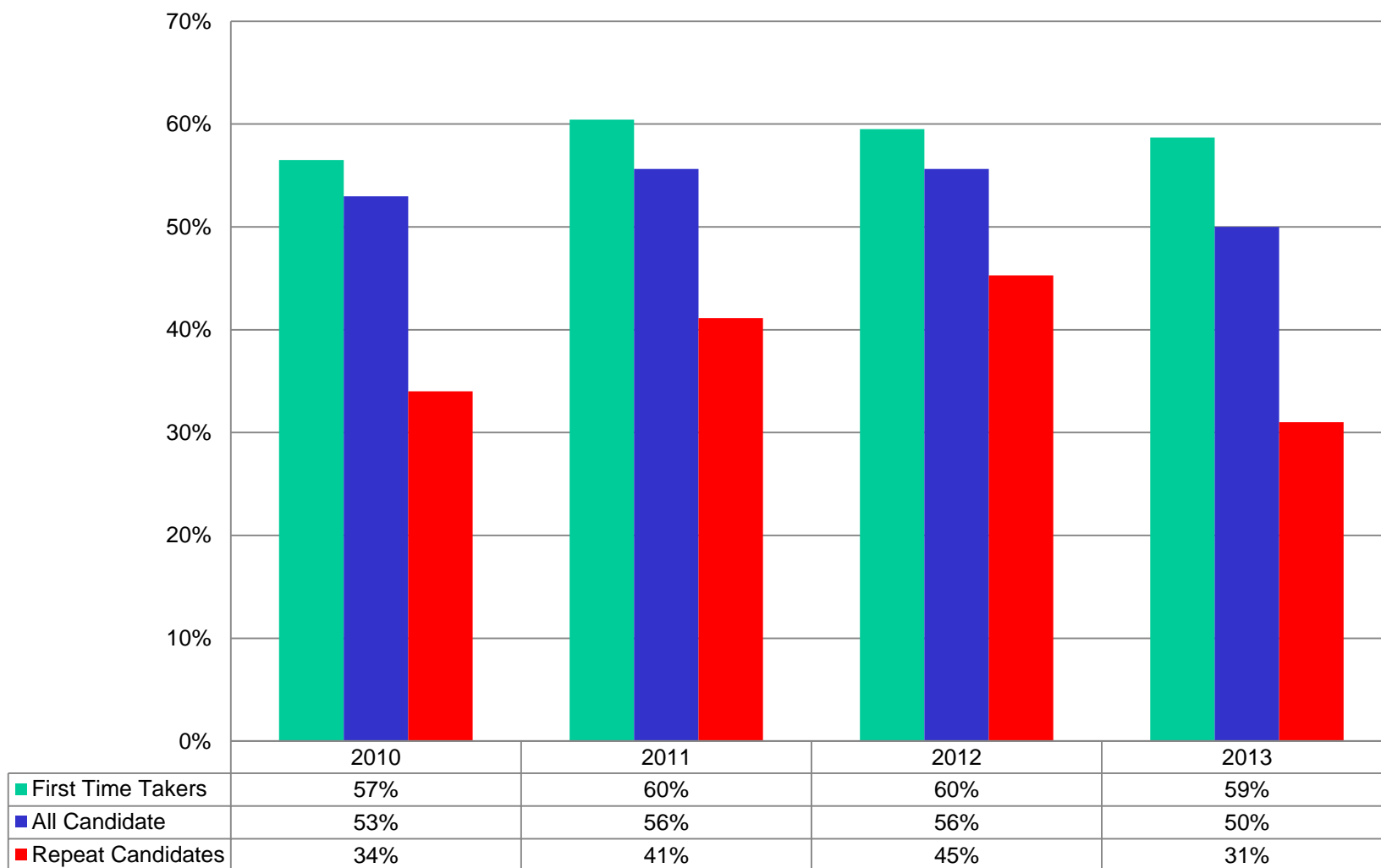
Pass Rate Part 1: General & Clinical (Percentages)



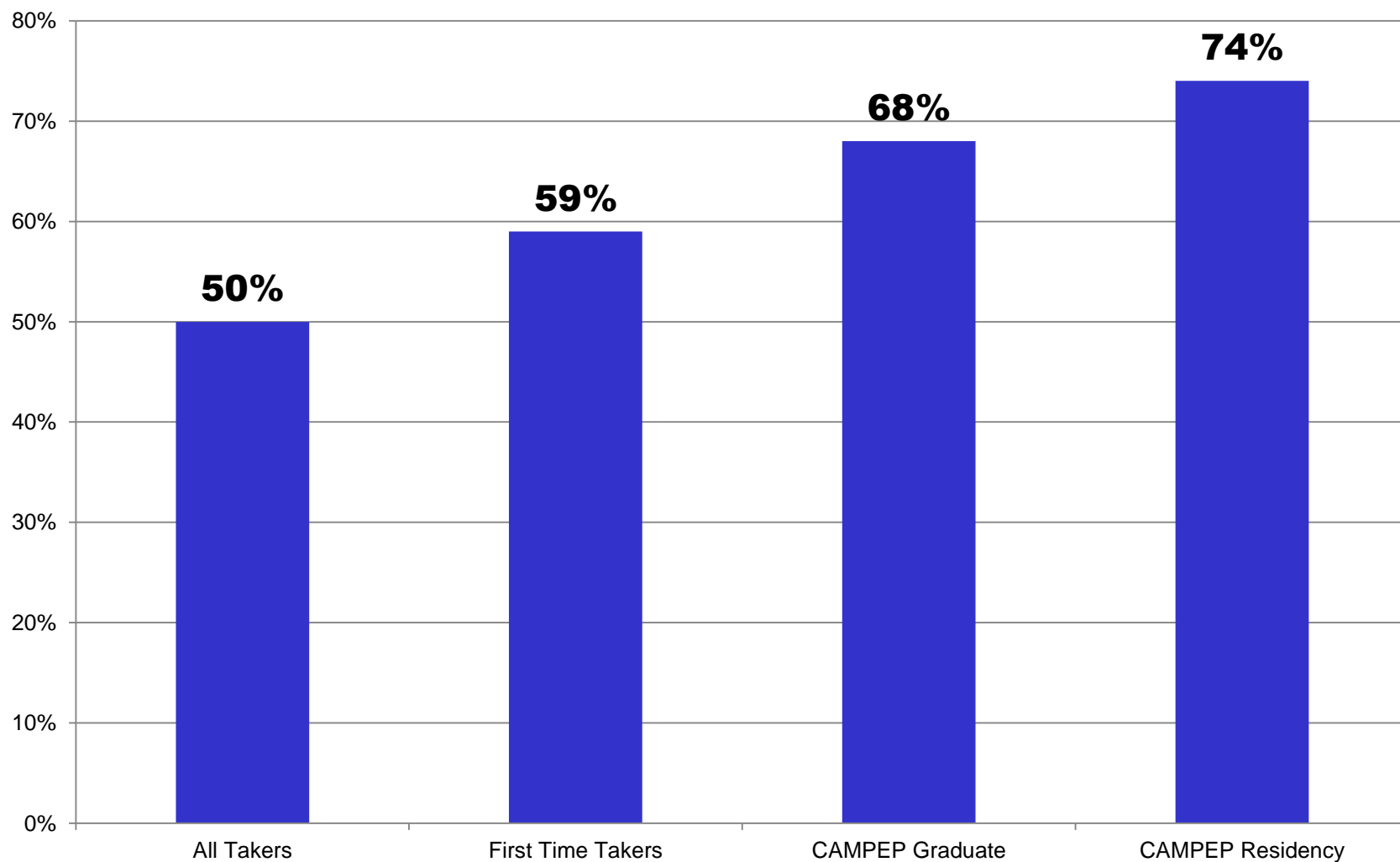
Pass Rate Part 2 (Percentages)



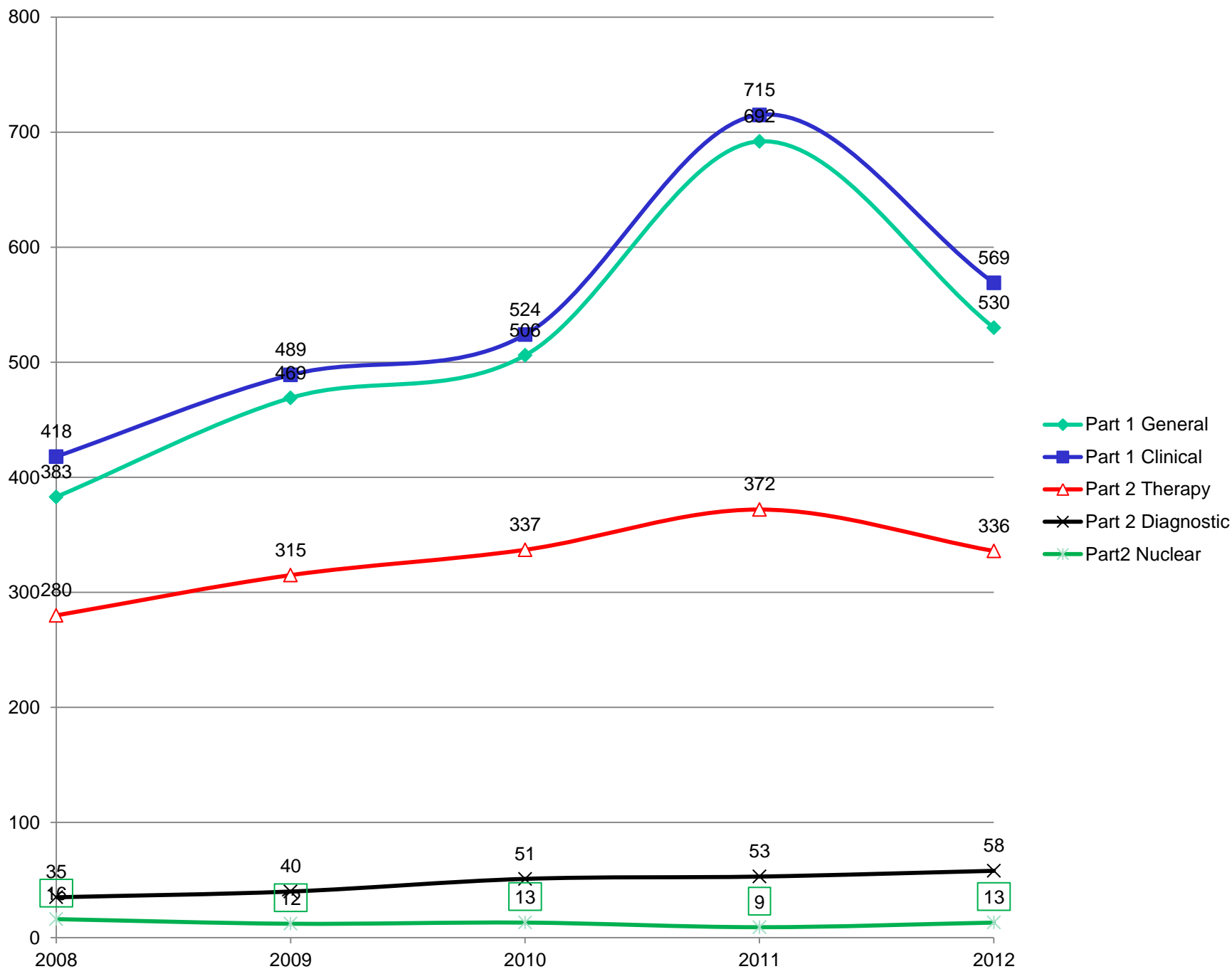
Pass Rate – Oral Examination



Oral Pass Rates 2013



Number of Candidates



Time Limits and “Board Eligible”

Concepts

- **Replace “opportunities” with time limits.**
- **Require additional education or training if candidate “times out .”**
- **Make “Board Eligible” an official status.**

Part 1: General and Clinical

- **Approved to take Part 1 after January 1, 2011**
 - Must pass Part 1 & Clinical within 5 years of approval.
- **Approved to take Part 1 prior to January 1, 2011**
 - Must pass Part 1: General & Clinical by December 31, 2016.
- **If you do not pass by the required date, you must complete an additional year of education at an institution that has a CAMPEP-accredited educational program before you can be approved to retake Part 1.**

Part 1 to Part 2 Approval

The ABR does not have a time limit between passing Part 1 and being approved for Part 2.

“Board Eligible”

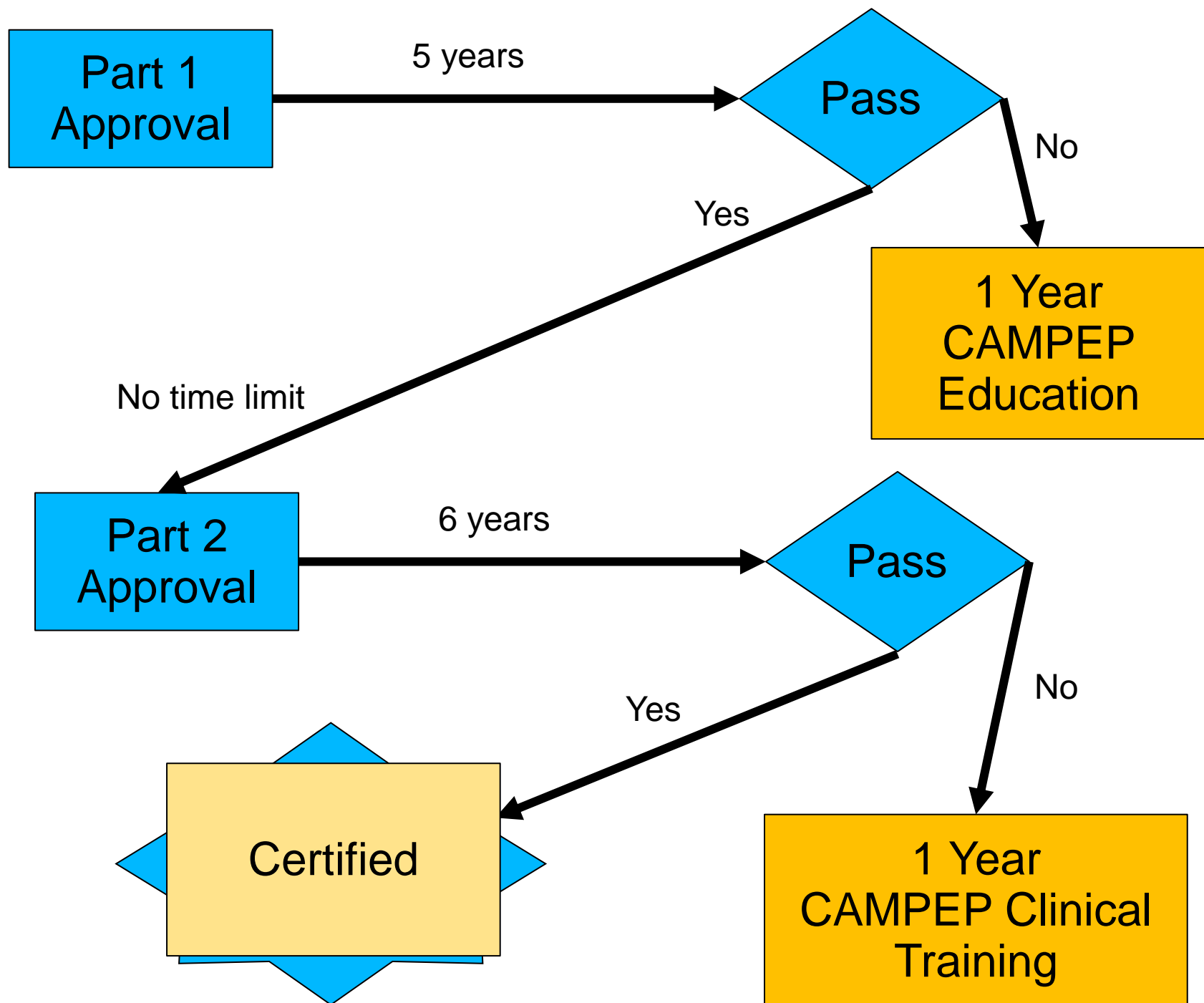
When one is approved for Part 2 or completes a CAMPEP residency, one becomes “Board Eligible.”

This is an official ABR and ABMS status, and candidates may describe themselves as “Board Eligible.”

The ABR will report the candidate as “Board Eligible.”

Board Eligible

- **Approved after January 1, 2011**
 - Must become certified within 6 years of approval.
- **Approved prior to January 1, 2011**
 - Must become certified by December 31, 2016.
- **If you do not pass by the required date, you must complete an additional year of training at an institution that has a CAMPEP-accredited residency program before you can be approved to be board eligible.**
- **The ABR will report your status as “Not Certified and Not Eligible for Certification.”**



Additional Certificates

You may apply for additional certificates after 1 year of clinical training under the supervision of an ABR physicist.

You are then “Board Eligible” in additional discipline.

- **Part 2**
- **Oral**

You must become certified in the additional field within 6 years of approval, or an additional year of clinical training at an institution that has a CAMPEP residency is required.