

Against the Proposition

{ Brachytherapy is better than external beam
therapy for partial breast irradiation

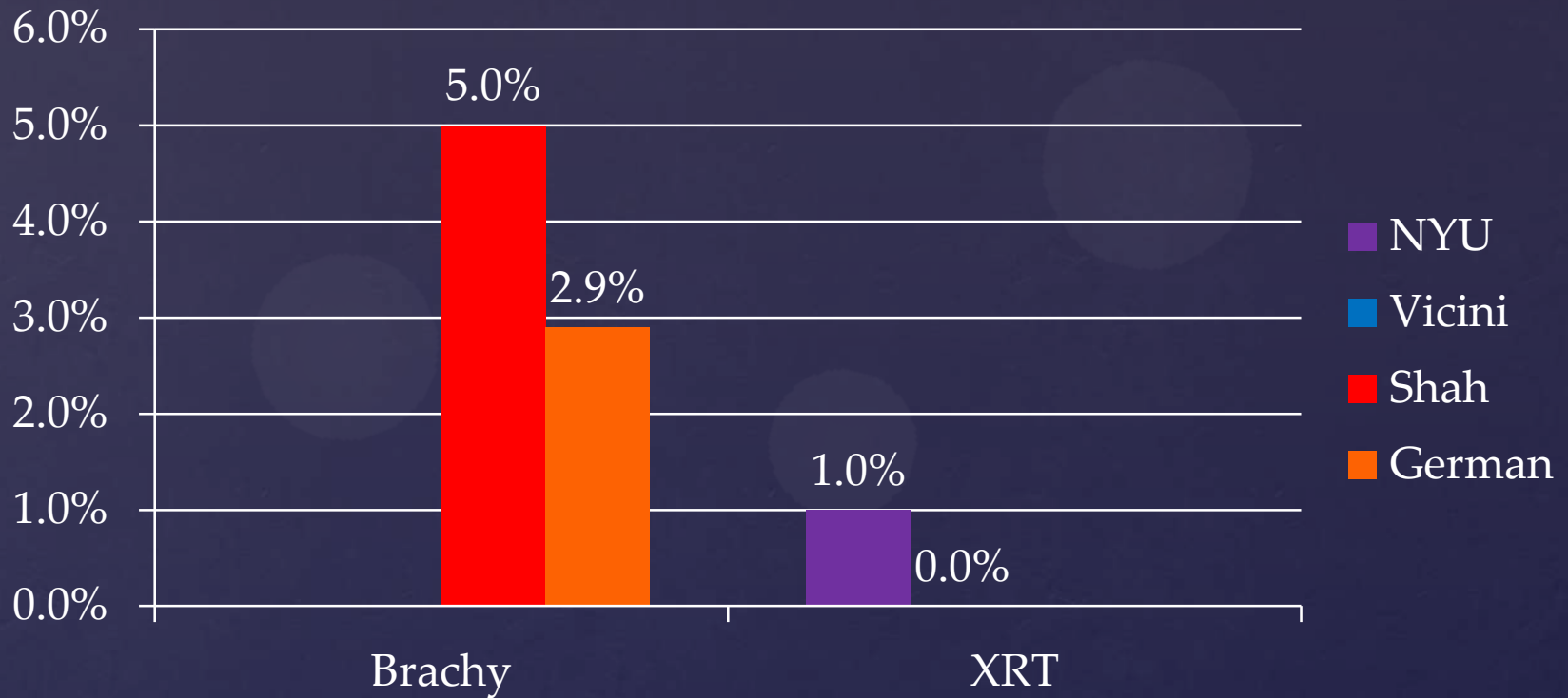
Stewart J Becker, PhD
8/6/13



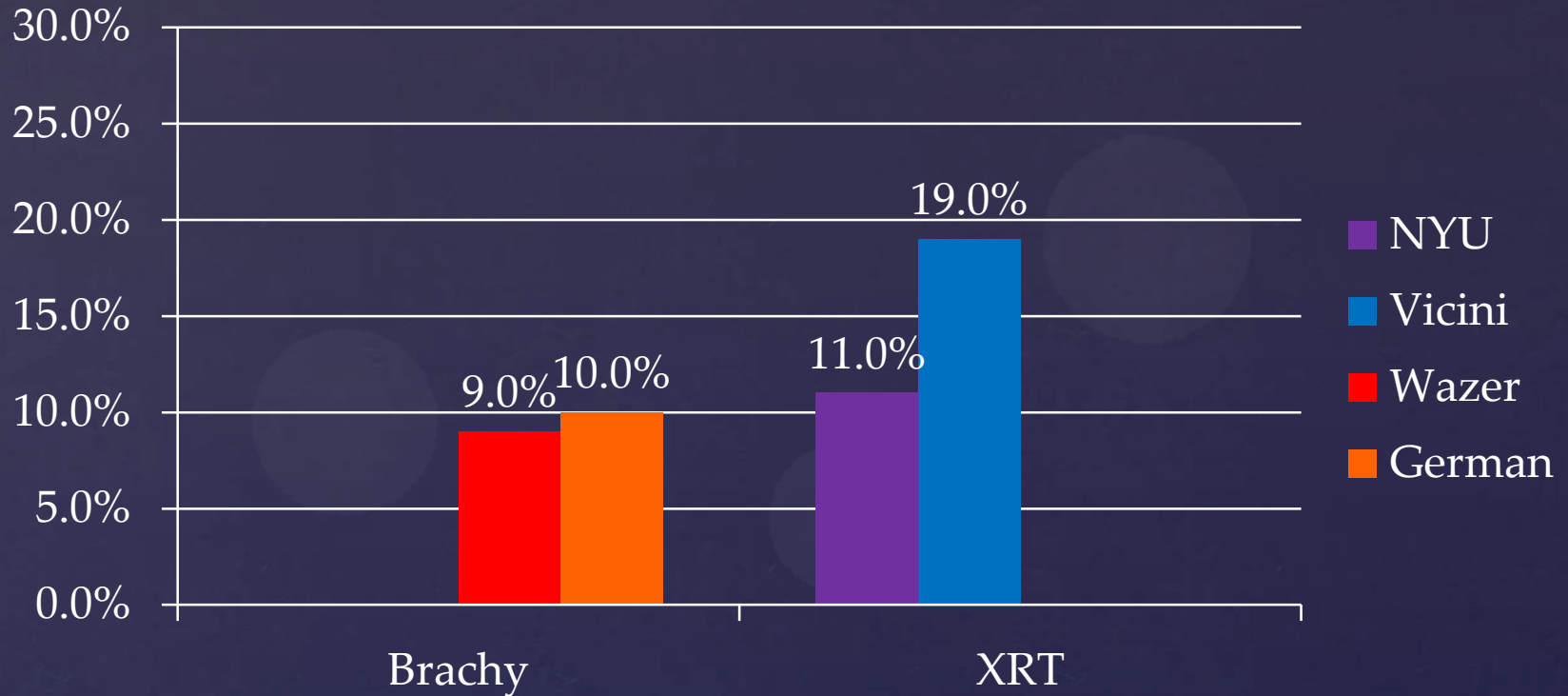
What is most important!!



Outcomes & Cosmesis



Outcomes – Local Recurrence



Cosmesis – Fair/Poor



What do we need?



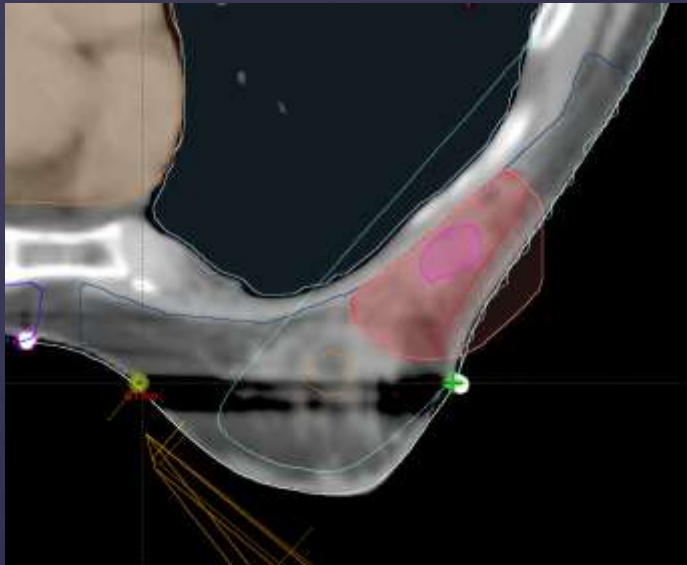
What's important?



Cost



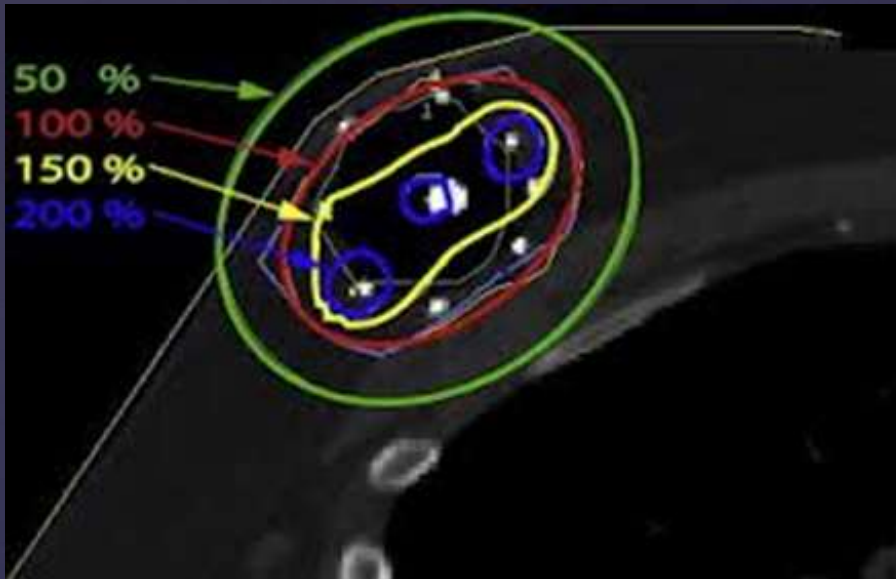
Labor



Difficult Cases

External beam is
.....easier &
.....cheaper

Conclusions



Hot Spots vs Integral Dose