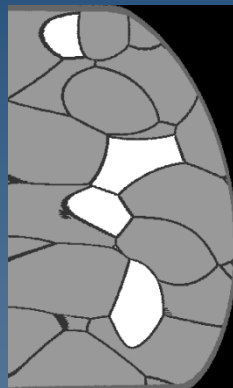


# 3D Anthropomorphic Breast Phantom

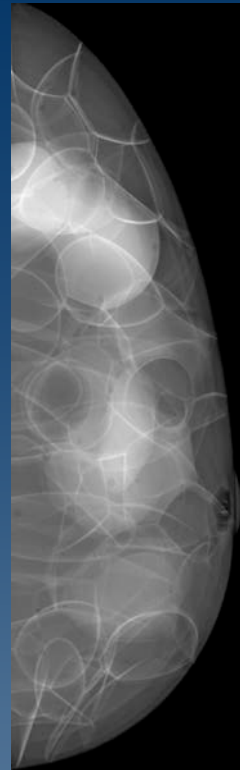
*Bakic & Maidment, Penn*



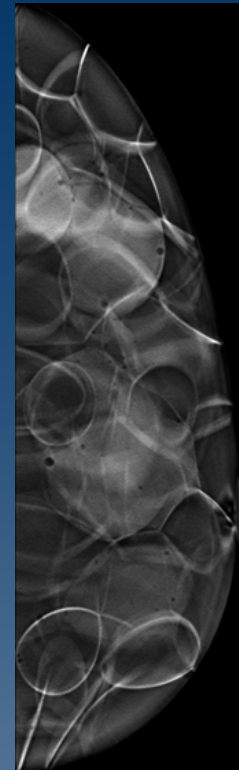
*Oblique Reconstruction using Briona,  
Real Time Tomography, LLC.*



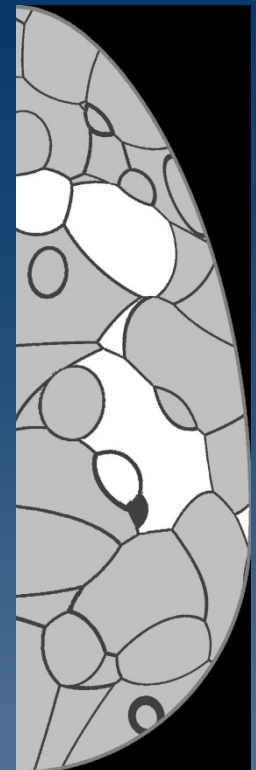
*Hologic  
Mammogram*



*GE  
Mammogram*



*Hologic DBT  
Recon Image*



*Ground Truth:  
Digital Phantom  
Section*

# 3D Anthropomorphic Breast Phantom

*Bakic & Maidment, Penn*

## Advantages:

- Anthropomorphic, structured design
- 2D & 3D breast x-ray imaging compatibility
- Ground truth: matching digital phantom
- Realistic 3D glandularity & parenchymal features
- Potential for extension to multimodality

## Applications:

- Preclinical testing of imaging systems
- Clinical QC/QA
- Validation of image acquisition models