

Why Should We Learn Radiation Oncology Coding?

Terry Wu, Ph.D.

Chief Physicist
Radiation Oncology Department
Willis-Knighton Cancer Center

Who Should Know Radiation Oncology Coding?

- Radiation Oncologist
- Department Administrator
- Billing Specialist/Expert
- Medical Physicist
- Radiation Dosimetrist
- Radiation Therapist

It depends who can answer the following

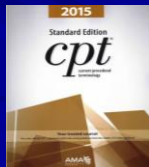
- IMRT, IGRT, SRS, SBRT, 3D Conformal,
Isodose plan, FIF, MLC, Wedge,
Mammosite, Savi ...etc.

To Be a Competent Medical Physicist

- Knowledge of coding could change your career path.
- Should know every aspect of radiation oncology.
- It is fun and easy to learn coding.

What is CPT Code

- CPT (Current Procedural Terminology)
- Radiation Oncology
 - Codes from 77260-77799
 - Includes Simulation, External Beam Radiation, Brachytherapy, Proton Beam and Hyperthermia



- Professional Component (PC) – covers the work done by physician directly
- Technical Component (TC) – covers the cost of equipment, supplies and work done by support staff (physicist, dosimetrist and radiation therapist)

- Most codes include two components
- Some codes are purely technical
 - 77336, 77370-77373, 77401-77418, G-code
- Some codes are purely professional
 - 77261-77263, 77427, 77431, 77432, 77435
- Some situations, billing is “Global” both PC and TC

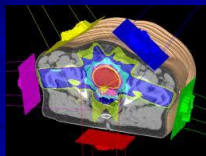
Consultation

- Outpatient Consultation
 - 99241- 99245
 - Requires comprehensive history, examination and medical decision
- Inpatient Consultation
 - 99251- 99255



Clinical Treatment Planning

- This is not for computer treatment planning
- Specific for physician's decision of radiation planning
- 77261 – Simple
- 77262 – Intermediate
- 77263 - complex



Simulation

- 77280 – Simulation simple
- 77285 – Simulation intermediate
- 77290 – Simulation complex
- 77293 – Motion management simulation
- 77295 – 3D simulation and isodose plan



Physics, Dosimetry, and Special Services

- 77300 – Basic dosimetry calculation
- 77306 – Isodose plan simple
- 77307 – isodose plan complex
- 77321 – Special port plan
- 77331 – Special dosimetry
- 77336 – Continuing physics consultation
- 77370 – Special physics consultation

Treatment Devices Design and Construction

- 77332 – Treatment devices simple
- 77333 – Treatment devices intermediate
- 77334 – Treatment devices complex



Treatment Delivery

- 77402 : Treatment delivery > 1 MeV; simple
- 77407 : Treatment delivery >1 MeV; Intermediate
 - 2 separate tx areas, 3 or more ports
- 77412 : Treatment delivery > 1 MeV; Complex
 - 3 separate tx areas, custom blocking
- 77417 : Port films



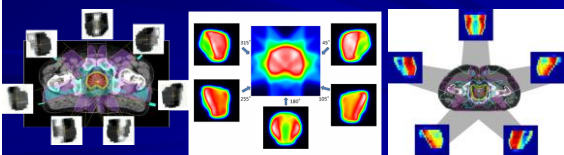
Treatment Management

- 77427 – Treatment management for 5 treatments
- 77431 – For 1 or 2 fractions only
- 77470 – Special treatment procedure



IMRT

- 77301 – IMRT planning
- 77338 – IMRT MLC design and construction
- 77385 – IMRT treatment delivery (Prostate/Breast)
- 77386 – IMRT treatment delivery (All Others)



IGRT

- 77387 or 77421 – Stereoscopic X-ray guidance
- 77387 or 77014 – Computed tomography guidance (for placement of therapy fields)
- Only for 3D Conformal, IMRT, and Proton treatments



Special Situations

- 77295 and 77301 need more documentation (medical necessity)
- Once per treatment course:
 - 77295, 77301, 77261-77263, 77470, 77370
- Bundling codes
 - Example 77301
 - Do not bill on the same day as
 - 77014, 77263, 77280-77295,
 - Typically billed alone

Example of Whole Brain Treatment

- 3 Gy x10 fractions, 6X, mask, MLC blocks, Rt/Lt Lateral fields, CT simulation
- Consultation: 99245
- Clinical treatment planning: 77263
- CT Simulation:
 - 77290 complex sim, 77334 treatment device (mask)



Whole Brain Treatment

- Dosimetry
 - 77307 Isodose plan complex, 77300x0 basic dosimetry MU calculation, 77334x2 treatment devices for MLC blocking
- 1st treatment
 - 77280 verification simulation
- Treatment delivery
 - 77412x10: >1 MeV with custom MLC blocking

- Weekly Management – 77427 x2
- Weekly Physics – 77336 x2
- Additional port film on 6th Tx - 77417
- Follow-up after completion of Tx - 99214

Summary of Whole Brain Reimbursement (2015)

Code	Description	units	PC (-26)	TC	
99245	Consultation	1	????		
77263	Radiation therapy planning	1	\$166		
77290	Simulation complex	1	\$81	\$426	
77334	Treatment devices	3	\$64x3	\$86x3	
77307	Isodose plan complex	1	\$150	\$135	
77300	Basic Dosimetry	2	\$0	\$0	
77280	Simulation simple	1	\$36	\$235	
77412	Treatment delivery	10		\$241x10	
77427	Treatment management	2	\$186x2		
77336	Weekly physics	2		\$75x2	
77417	Port film	1		\$14	
Total:			\$997	\$3628	

Example of Lung Treatment

- Stage IIIB Lt Lung Treatment
- 4DCT motion study and 3D simulation
- 3 Fields (RAO, LAO with 6X and LPO with 18X), 2 Gy x20 fractions, OBI, Vacbag
- 7 Fields step and shoot IMRT boost with 6X, 2 Gy x 13 fractions, OBI
- Concurrent Chemotherapy
- Diode measurement for MU verification

Initial 3D Treatment

- Consultation: 99245
- Clinical treatment planning: 77263
- CT Simulation:
 - 77290 complex sim, 77334 treatment device (Vacbag)
- 4DCT: 77293 lung motion management

Initial 3D Treatment

- Dosimetry
 - 77295 3D simulation with isodose plan, 77300x3 basic dosimetry MU calculation, 77334x3 treatment devices for MLC blocking
- 1st treatment
 - 77280 verification simulation
 - 77331x2 special dosimetry for diode measurement
- Treatment delivery
 - 77412x20: >1 MeV with custom MLC blocking
 - (77387 or 77421)x19: Stereo X-ray Guided OBI

IMRT Boost

- Dosimetry
 - 77301 IMRT planning, 77300x7 basic dosimetry MU calculation, 77338 MLC design for IMRT
- 1st boost treatment
 - 77290 verification complex simulation
- Treatment delivery
 - 77386x13: IMRT treatment delivery
 - (77387 or 77421)x12: Stereo X-ray Guided OBI

- Weekly Management – 77427 x7
- Weekly Physics – 77336 x7
- Concurrent Chemotherapy - 77470
- Additional port film weekly - 77417 x7
- Follow-up after completion of Tx - 99214

Summary of Lung Treatment Reimbursement (2015)

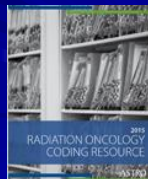
Code	Description	units	PC (-26)	TC	
99245	Consultation	1	???		
77263	Radiation therapy planning	1	\$166		
77290	Simulation complex	2	\$81x2	\$426x2	
77293	Motion management	1	\$104	\$328	
77334	Treatment devices	4	\$64x4	\$86x4	
77295	3D simulation& Isodose plan	1	\$223	\$262	
77300	Basic Dosimetry	10	\$32x10	\$35 x10	
77280	Simulation simple	1	\$36	\$235	
77331	Special Dosimetry	2	\$45x2	\$18x2	
77412	11-19 MeV Treatment delivery	20		\$252x20	
77387 or 77421(G6002)	Stereo X-ray guided	31	\$20x31	\$54x19	
77301	IMRT planning	1	\$414	\$1545	
77338	MLC design for IMRT	1	\$223	\$278	
77386	IMRT treatment delivery	13		\$395x13	

Code	Description	units	PC (-26)	TC	
77427	Treatment management	7	\$186x7		
77336	Weekly physics	7		\$75x7	
77417	Port films	3		\$14x3	
77470	Special Treatment Procedure	1	\$108	\$47	
Total:			\$4024	\$16693	

- Every procedure needs order
- Every code needs documentation

References

- "2015 CPT Standard Edition"
- "The 2015 Radiation Oncology Coding Resource", ASTRO publication
- <https://www.cms.gov/apps/physician-fee-schedule>



Billing Consultations

- American Medical Accounting & Consulting (AMAC), Inc.
- Churchill Consulting Inc.
- Revenue Cycle Inc.
- As many as 30 companies provide billing/collection services

Special Procedures

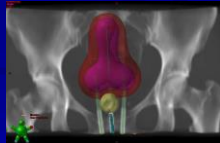
- Brachytherapy
 - HDR Tandem and Ring
 - HDR Mammosite/Savi
- Stereotactic Body Radio Therapy (SBRT)

Brachytherapy Codes

- 77750: Infusion or instillation of radioelement solution (Sr-89, P-32, or I-131)
- 77761-77763: LDR Intracavitary radiation source application
- 77776-77778: LDR Interstitial radiation source application
- 77785: HDR 1 channel
- 77786: HDR 2-12 channels
- 77787: HDR over 12 channels
- 77789: Surface application (Sr-90 eye applicator)
- 77790: Supervision, handling, and loading of radiation source

Brachytherapy Planning (Isodose) Codes

- 77316: Brachytherapy isodose plan; simple; 1-4 sources or HDR 1 channel
- 77317: Intermediate; 5-10 sources or HDR 2-12 channels
- 77318: Complex; over 10 sources or HDR over 12 channels



Special Procedure HDR Tandem & Ring

- Consultation: 99245
- Clinical treatment planning: 77263



1st Fraction

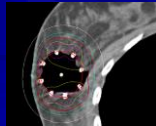
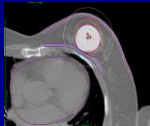
- Placement of HDR applicator: 57155
- CT Simulation:
 - 77332 treatment device simple (HDR applicator)
- Complex Procedure: 77470
- Dosimetry
 - 3D Simulation/planning: 77295
 - Special Physics Consultation: 77370
- HDR Treatment
 - HDR treatment (2-12 channels): 77786

2nd Fraction

- Placement of HDR applicator: 57155
- CT Simulation:
 - Simulation Complex: 77290
- Dosimetry
 - Brachytherapy isodose plan complex: 77317
- HDR Treatment
 - HDR treatment (2-12 channels): 77786

Mammosite/Savi

- Consultation: 99245
- Clinical treatment planning: 77263
- CT Simulation/Dosimetry
 - 3D simulation: 77295
 - Complex Procedure: 77470
- Special Physics Consultation: 77370



Mammosite/Savi

- Day 1: AM Treatment
 - Simple Simulation: 77280
 - Basic Dosimetry: 77300
 - HDR Treatment: 77785 (1 channel) or 77786 (2 or more channels)
- Day 1: PM Treatment
 - Simple Simulation: 77280
 - Basic Dosimetry: 77300
 - HDR Treatment: 77785 (1 channel) or 77786 (2 or more channels)
- Repeat AM/PM charges for day 2-5
- Weekly Physics: 77336x2



Stereotactic Radiation Treatment

- 77371: Cobalt 60 based radiosurgery (SRS); single fraction
- 77372: Linac based radiosurgery; single fraction
- 77373: Body radiation therapy per fraction; not to exceed 5 fractions
- 77432: Stereotactic cranial lesion treatment management
- 77435: Stereotactic body radiation therapy management



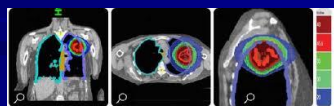
Stereotactic Body RadioTherapy (SBRT)

- Consultation: 99245
- Clinical treatment planning: 77263
- CT Simulation/Dosimetry
 - Simulation complex: 77290
 - Treatment Device Complex: 77334 (Bodyfix)
 - Complex Procedure: 77470
- Dosimetry
 - IMRT planning: 77301
 - Basic Dosimetry: 77300
 - MLC design for IMRT: 77338
 - Special Physics Consultation: 77370



Stereotactic Body RadioTherapy (SBRT)

- Treatment:
 - Stereotactic body radiotherapy delivery: 77373 x # of fractions (up to 5)
 - Stereo body radiotherapy management: 77435
 - Weekly physics: 77336



Frequently Asked Questions

- Can we charge 77301 again when we replan the IMRT?
- Where is the physics IMRT QA charge for IMRT?
- Should we charge special physics consultation 77370 for routine IMRT?
- Can we charge Field in Field (FiF) just like IMRT?

■ Questions?
