









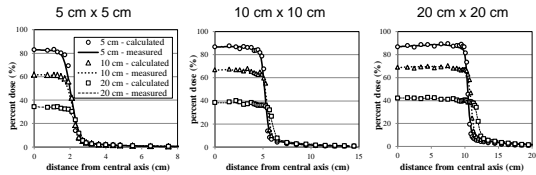


## Monte Carlo Methods

**RED**  
RADIOLOGICAL ENGINEERING &  
DESIGN LABORATORY

In-field and out-of-field Monte Carlo simulations should be benchmarked to measurements.

### In/Cross-plane Dose Profile Curves



Bednarz, B. and X. G. Xu (2009) *Phys Med Biol* 54(4): N43-57

7/16/2015 | AAPM Annual Meeting 2015, Anaheim, CA | Bryan Bednarz

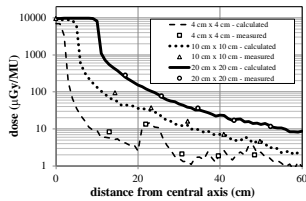


## Monte Carlo Methods

**RED**  
RADIOLOGICAL ENGINEERING &  
DESIGN LABORATORY

In-field and out-of-field Monte Carlo simulations should be benchmarked to measurements.

### Extended Dose Profile Curves



Bednarz, B. and X. G. Xu (2009) *Phys Med Biol* 54(4): N43-57

7/16/2015 | AAPM Annual Meeting 2015, Anaheim, CA | Bryan Bednarz



## Monte Carlo Methods

**RED**  
RADIOLOGICAL ENGINEERING &  
DESIGN LABORATORY

In-field and out-of-field Monte Carlo simulations should be benchmarked to measurements.

### Suggested modeling benchmarks:

#### In-field

- Central-axis depth doses within 0.5% for depths between  $d_{max}$  and 20 cm
- Central-axis depth doses within 1.0% for depths greater than 20 cm
- Central-axis depth doses within 5.0% for depths less than  $d_{max}$
- Off-axis dose profiles within 2.0% of central-axis value
- Off-axis dose profiles in penumbra reproduced to within 2 mm of measured values.

#### Out-of-field

- In-plane extended dose profiles with 10% of measured data on average
- Cross-plane extended dose profiles within 10% of measured data on average

\*Photon and proton modeling should follow clinical TPS commissioning benchmarks.

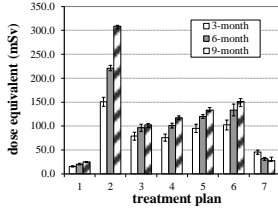
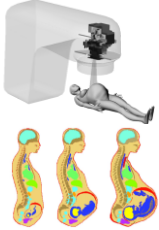
7/16/2015 | AAPM Annual Meeting 2015, Anaheim, CA | Bryan Bednarz



## Monte Carlo Methods



Advanced modeling and simulation can help address clinical needs.



Over 3,500 pregnant patients are diagnosed with cancer in US each year.

Bednarz, B and Xu, XG. (2008) Med. Phys. 35(7) 3054-3061

7/16/2015 | AAPM Annual Meeting 2015, Anaheim, CA | Bryan Bednarz

---

---

---

---

---

---

---

---

---

---

---

---

## Acknowledgements



### RED Lab Members:

#### TG-151 Committee:

- Stephen Kry, PhD (co-Chair)
- Rebecca Howell, PhD
- Larry Dauer, PhD
- David Followill, PhD
- Eric Klein, PhD
- Harald Paganetti, PhD
- Brian Wang, PhD
- Chen-Shi Wu, PhD
- X. George Xu, PhD

Ming Yang



Abby Besemer



Ian Marsh



Charlie Matrosic



7/16/2015 | AAPM Annual Meeting 2015, Anaheim, CA | Bryan Bednarz

---

---

---

---

---

---

---

---

---

---

---

---